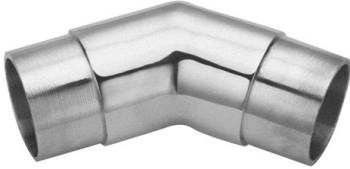


**49-730/1H16 316 Satin (Brushed) Stainless Steel Flush 135 Deg Angle 1-1/2" Tubing 16 Gauge**



A streamlined look is achieved with the use of flush hand rail fittings. Component options ensure simple assembly and flexibility to accommodate any project. Our line of flush hand rail fittings feature a 1" long sleeve (The longest in the industry) for added strength and adhesive coverage.

Note:

**Flush fittings DO NOT include screws.** Attach tube to fitting with Lido Weld adhesive, LB-00201.