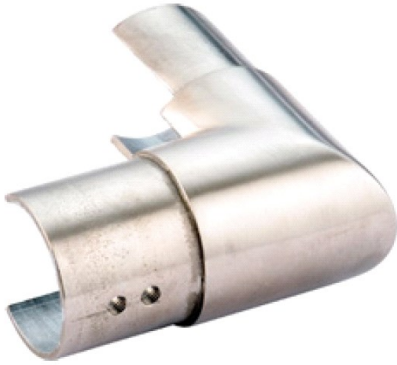


**47-732UV/424 316 Polished Stainless Steel Vertical Flush Ell for Channel Tube 1.67" Tubing**



Vertical Flush Ell for Channel Tube

Connects channel tube in 90° angle vertically.

Item #	Material	Finish	Tube OD	Wall Thick	W	L	Compatible Tubing OD
49-732UV/424	SS 316	Satin	1.67"	0.06"	1.14"	1.14"	49-A114
47-732UV/424	SS 316	Polished	1.67"	0.06"	1.14"	1.14"	47-A114

A streamlined look is achieved with the use of flush fittings. Different options ensure simple assembly and flexibility to accommodate any project. Our flush fittings feature a 1" long sleeve (The longest in the industry) for added strength and adhesive coverage.

Note:

**Flush fittings DO NOT include screws.** Attach tube to fitting with Lido Weld adhesive, LB-00201.