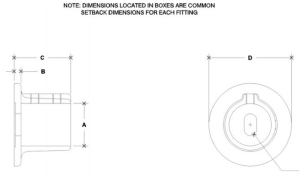
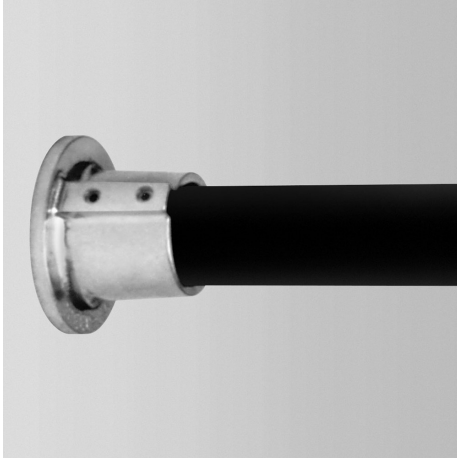


**27100 Round Wall Flange Aluminum Magnesium 1-1/4" IPS (1.72" ID)**



#43 Round Wall Flange

PIPE SIZE	ENGLISH UNITS (in/mm)					PIPE SIZE	METRIC UNITS (mm)					
	A	B	C	D	E		A	B	C	D	E	F
1/2"	1.00	0.31	2.54	1.50	0.53	1.27	25.4	7.9	63.5	38.1	13.5	31.8
3/4"	1.00	0.31	2.54	1.50	0.53	1.27	25.4	7.9	63.5	38.1	31.8	
1"	1.00	0.31	2.54	1.50	0.53	1.27	25.4	7.9	63.5	38.1	31.8	
1 1/4"	1.00	0.31	2.54	1.50	0.53	1.27	25.4	7.9	63.5	38.1	31.8	
1 1/2"	1.00	0.31	2.54	1.50	0.53	1.27	25.4	7.9	63.5	38.1	31.8	

[Click here for chart](#)

**BUYRAILINGS**  
ARCHITECTURAL AND INDUSTRIAL RAILINGS

2" IPS  
Schedule 40 2.375" O.D. 0.154" Wall  
Schedule 80 1.937" I.D. 0.218" Wall

1 1/2" IPS  
Schedule 40 1.912" O.D. 0.140" Wall  
Schedule 80 1.507" I.D. 0.207" Wall

1" IPS  
Schedule 40 1.315" O.D. 0.109" Wall  
Schedule 80 1.043" I.D. 0.157" Wall

3/4" IPS  
Schedule 40 1.043" O.D. 0.109" Wall  
Schedule 80 0.812" I.D. 0.157" Wall

1/2" IPS  
Schedule 40 0.812" O.D. 0.109" Wall  
Schedule 80 0.625" I.D. 0.157" Wall