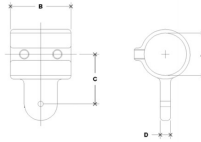


05280 Adj. Elbow or Tee Male Body Aluminum Magnesium 3/4" IPS (1.09" ID)



NOTE: DIMENSIONS LOCATED IN BOXES ARE COMMON
SETBACK DIMENSIONS FOR EACH FITTING



#17M Adjustable Elbow or Tee Male Body
SCALE: HALF

PIPE SIZE	ENGLISH UNITS (Inches)						PIPE SIZE	METRIC UNITS (mm)						
	A	B	C	D	E	F		A	B	C	D	E	F	G
1/2"	1.00	1.00	1.00	1.00			25	25	25	25				
3/4"	1.50	1.50	1.50	1.50			38	38	38	38				
1"	1.88	1.88	1.88	1.88			48	48	48	48				
1 1/4"	2.38	2.38	2.38	2.38			60	60	60	60				
1 1/2"	2.88	2.88	2.88	2.88			73	73	73	73				
2"	3.38	3.38	3.38	3.38			86	86	86	86				
2 1/2"	3.88	3.88	3.88	3.88			99	99	99	99				

[Click here for chart](#)

BUYRAILINGS
ARCHITECTURAL AND INDUSTRIAL RAILINGS

2" IPS
2.375" Outer O.D.
Schedule 40 2.381" I.D. @ 150' Max
Schedule 80 1.937" I.D. @ 210' Max

1 1/2" IPS
1.902" Outer O.D.
Schedule 40 1.907" I.D. @ 150' Max
Schedule 80 1.507" I.D. @ 210' Max

1" IPS
1.315" Outer O.D.
Schedule 40 1.320" I.D. @ 150' Max
Schedule 80 1.097" I.D. @ 210' Max

3/4" IPS
1.060" Outer O.D.
Schedule 40 1.065" I.D. @ 150' Max
Schedule 80 0.824" I.D. @ 210' Max

1/2" IPS
0.625" Outer O.D.
Schedule 40 0.630" I.D. @ 150' Max
Schedule 80 0.514" I.D. @ 210' Max