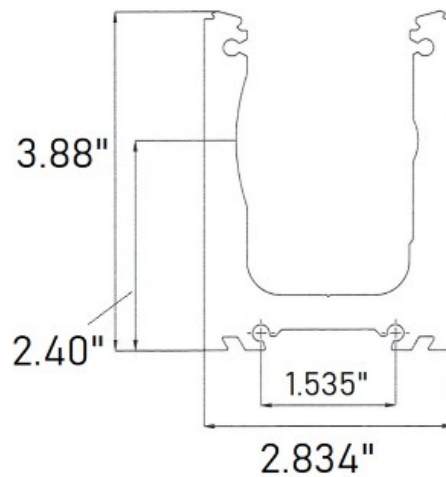


**50-BSTM68-F** Tilt-Lock Base Shoe - Floor Mount, Satin Anodized



Optimal alignment can be achieved with this aluminum base shoe using the Tilt-Lock rotating pressure plate system.

Up to 30mm (1.18") glass tilt adjustment back and forward.

Tilt adjustment from inside of the balcony.