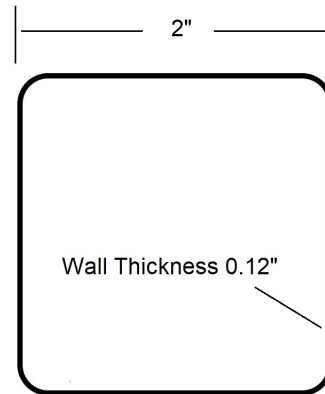
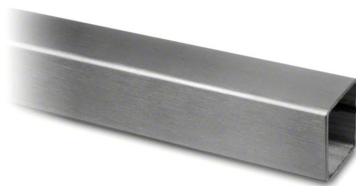


## 49-C16164 2" Square x 0.12" Tubing - 316 Grade Satin (Brushed) Stainless Steel



49-C16164 architectural square tube is a stainless steel tube with a 2" width, a 0.12" wall thickness, and is available in stock lengths up to 20 feet. It is made with 316 grade stainless steel.

This tube can be used in a variety of applications including, but not limited to

- Hand railing
- Foot (bar) railing
- Queuing railing
- Pony rail (mounted on top of a wall)
- Bathroom vanities
- Shelving systems

**Hardware Included:**

No hardware is included with this item.

**Material Care:**

Maintain a brushed (satin) finish with a non-abrasive cleaner. Apply with a soft, damp cloth.

**Related Items:**

352SQF, 352ASQF, 352SQ, and 352ASQ top rail brackets.

540SQ/2, 593/2 and 650/216 end cap.

Adhesive, item# LB-00201 together with activator, item# 00211.

**Shipping:**

Lengths up to 8 feet can ship by UPS.

Lengths longer than 8 feet ship by LTL freight (truck).

***The shipping cost for items 8 feet (96 inches) and over is notably higher because of freight carrier surcharges. To avoid this additional expense we ask that you consider ordering a shorter length, if possible. We can provide custom cut lengths just below 8 feet. Contact us for details.***

Call toll free at 877-810-4116 to talk to a specialist about your specific application.