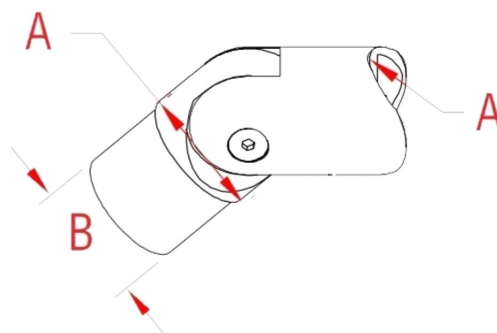


**49-818A/216 Adjustable Perpendicular Collar in Satin Stainless Steel 316 for Tubing Size-2" OD (0.06" Wall)**



A	B	WT(lbs)
2.00"	1.88"	2.24

This adjustable elbow is made of 316 grade stainless steel, has a satin (brushed) finish, and is designed to mount on the **outside** of a 2" OD tube on one side of the fitting. The other side of the fitting is designed to fit **inside** a 2" OD tube with a 0.06" thick wall. Mount the first side with a fastener or by welding. Connect the second side with adhesive.

**Material Care:** Clean with stainless steel cleaner and protectant, item# CAE-ZCleanKIT.

Call toll free at 877-810-4116 to speak with a product specialist.