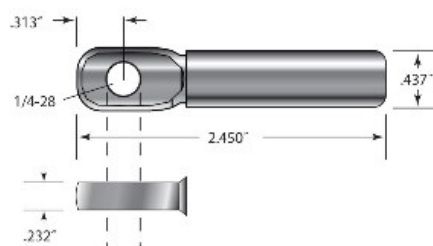


**PL-TE4** Push-Lock fitting with threaded eye end. 1/8" Cable. Use with SC-6



For stairs or severe pitches

Push-Lock® fittings with threaded eye ends are for use on stairs. They attach to a wood end post with a lag eye. See the drawing to determine how to interface this fitting with a metal end post or use our fixed tab or threaded tab. Mount with an SC-6 screw (sold separately).