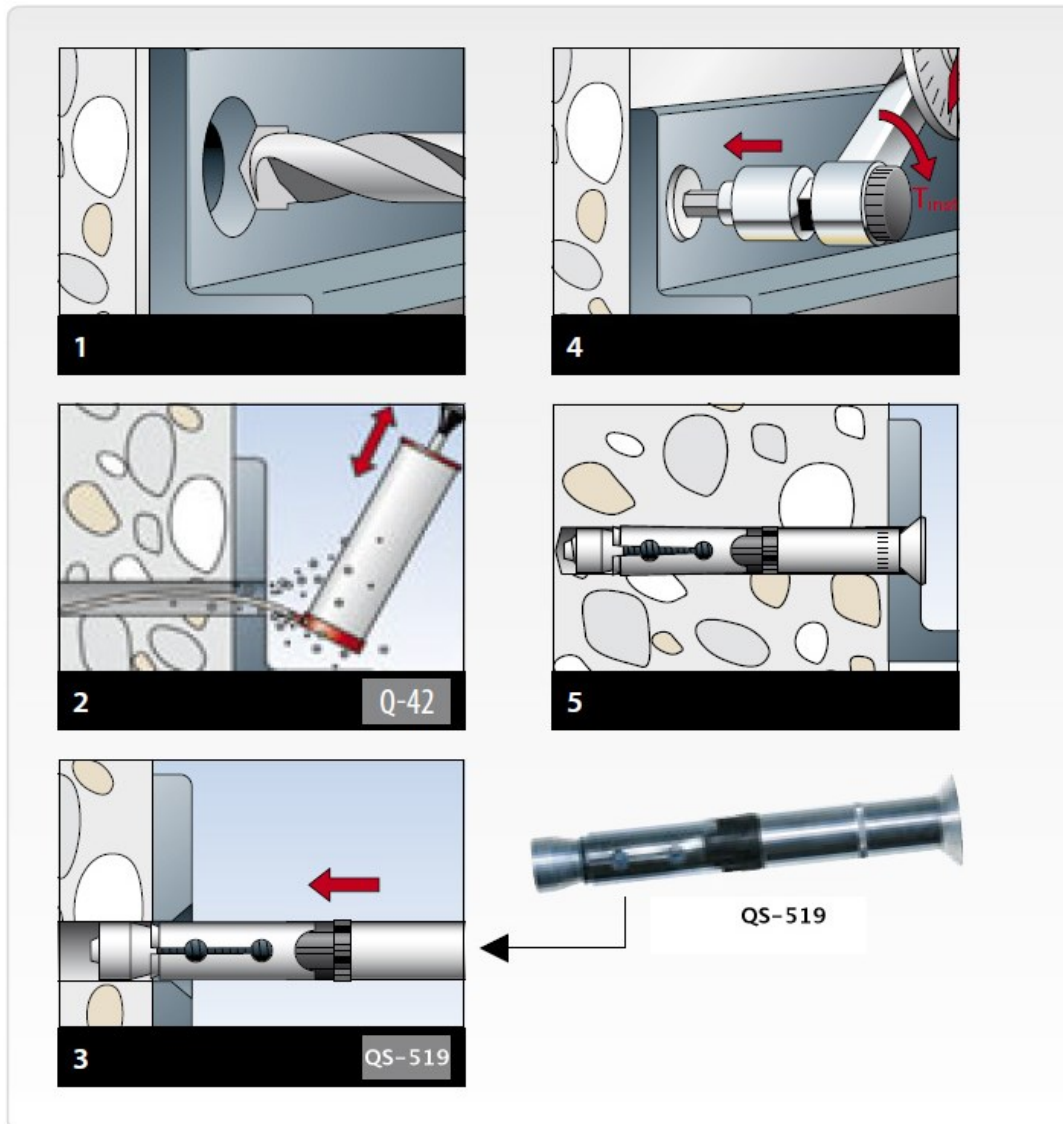


QS-519 M8 Concrete Anchor with Socket Head Length 5-1/8" - in Stainless Steel 316



- Heavy-duty sleeve anchor for push-through installation.
- When the hexagon nut or screw is tightened, the cone is pulled into the expansion sleeve and expands tensioning it against the hole wall.

- Made is stainless steel A4 for outdoor applications and damp rooms. Highly corrosion-resistant steel (material number 1.4529) for application in aggressive atmospheres.