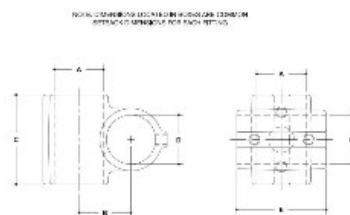
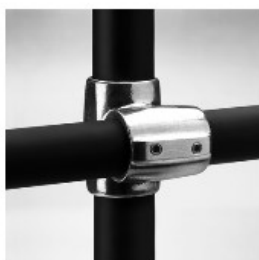


02130 Reducing Fitting. Offset Cross Aluminum Magnesium 1-1/4" x 1-1/2" IPS



#10-78 Offset Cross

S.D.S. 10-78

ENGLISH UNITS (inches)							METRIC UNITS (mm)								
PART SIZE	A	B	C	D	E	F	G	PART SIZE	A	B	C	D	E	F	G
1-1/4"	1.87	1.57	1.50					1-1/4"	47	40	38				
1-1/2"								1-1/2"							

- Quick and easy way to assemble structural pipe systems • Galvanized malleable iron
- Reduce labor costs by 70% • 100% reusable • No welding or threading • No drilling or bolting

Strong, malleable iron, slip-on pipe fittings with from one to five case-hardened set screws per fitting – depending on the number of pipes to be joined at one joint.

For slip-on aluminum fittings. These fittings can support an axial load of 2000 lbs per set screw with the set screw tightened to a torque of 29 lbs/ft. This is normally obtained when the screw is fully tightened using a ratchet wrench.