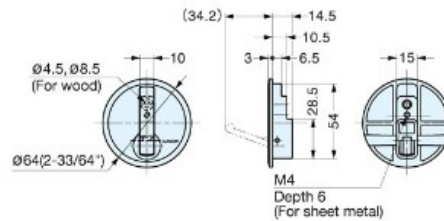


**SG-NF-R64** Matte Chrome Finish over Zinc. Recessed Hook. Hook spring loaded to retract.



Item No.	Load Capacity (kg)	Weight (g)	Box (pcs)	Carton (pcs)
NF-R64	20	90	10	120

Recessed Hook

Hook spring loaded to retract.

Ideal for vibration or shock application.

Panel thickness:

Wood: Minimum 25mm (1")

Sheet metal: 0.8 ~ 1.6 mm

Matte Chrome Finish.

Load Capacity 44 lbs

\*Use the NF-50 bracket for sheet metal installation

\*Dimensions shown in schematics in millimeters.