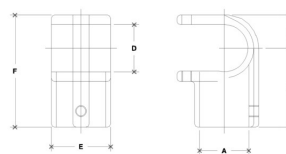


**07220 Bolt-On Tee Aluminum Magnesium 1-1/4" IPS (1.72" ID)**



NOTE: DIMENSIONS LOCATED IN BOXES ARE COMMON  
SETBACK DIMENSIONS FOR EACH FITTING



**#16 Bolt-On Tee**

SCALE: HALF

PIPE SIZE	ENGLISH UNITS (Inches)						PIPE SIZE	METRIC UNITS (mm)							
	A	B	C	D	E	F		G	A	B	C	D	E	F	G
1 1/4"	1.31	1.78	1.32	1.94	2.33	4.39	33	45	45	49	59	111	111	111	111
1 1/2"	1.68	2.15	1.22	1.99	2.55	4.00	43	71	31	40	52	102	102	102	102

[Click here for chart](#)

**BUYRAILINGS**  
ARCHITECTURAL & INDUSTRIAL RAILINGS

**2" IPS**  
2.315" Outside O.D.  
Schedule 40 2.362" I.D. 0.154" Wall  
Schedule 80 1.929" I.D. 0.218" Wall

**1 1/2" IPS**  
1.915" Outside O.D.  
Schedule 40 1.812" I.D. 0.149" Wall  
Schedule 80 1.583" I.D. 0.200" Wall

**1 1/4" IPS**  
1.660" Outside O.D.  
Schedule 40 1.587" I.D. 0.140" Wall  
Schedule 80 1.379" I.D. 0.191" Wall

**1" IPS**  
1.315" Outside O.D.  
Schedule 40 1.267" I.D. 0.124" Wall  
Schedule 80 1.087" I.D. 0.119" Wall

**3/4" IPS**  
1.060" Outside O.D.  
Schedule 40 1.034" I.D. 0.119" Wall  
Schedule 80 0.874" I.D. 0.134" Wall