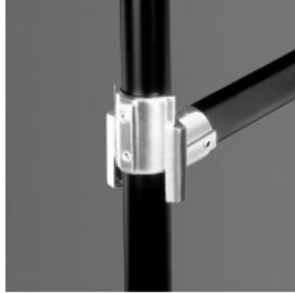
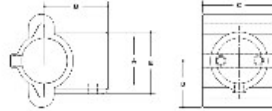


17000 Modular Tee Aluminum Magnesium 1-1/4" IPS (1.72" ID)



NOTES: DIMENSIONS SHOWN ARE NOMINAL. SEE DRAWING SPECIFICATIONS FOR TOLERANCES.



#2S Modular Tee
DIMENSIONS

PART NO.	UNION OF TWO TUBES						WELDED END JOINT							
	A	B	C	D	E	F	G	H	I	J	K	L	M	N
17000	20	240	11.2	121	212	-	-	-	-	-	14	14	14	14
17001	100	240	11.2	121	212	-	-	-	-	-	14	14	14	14
17002	150	240	11.2	121	212	-	-	-	-	-	14	14	14	14
17003	100	300	11.2	121	212	-	-	-	-	-	14	14	14	14
17004	150	300	11.2	121	212	-	-	-	-	-	14	14	14	14

[Click here for chart](#)

BUYRAILINGS
EQUIPMENT AND ACCESSORIES

2 1/2" IPS
2 1/2" Sch 40 O.D.
Schedule 40 2 1/2" I.D., 0.188" Wall
Schedule 40 1 3/4" I.D., 0.218" Wall

2" IPS
2" Sch 40 O.D.
Schedule 40 2" I.D., 0.188" Wall
Schedule 40 1 1/2" I.D., 0.207" Wall

1 1/2" IPS
1 1/2" Sch 40 O.D.
Schedule 40 1 1/2" I.D., 0.188" Wall
Schedule 40 1 1/4" I.D., 0.197" Wall

1" IPS
1" Sch 40 O.D.
Schedule 40 1" I.D., 0.188" Wall
Schedule 40 3/4" I.D., 0.178" Wall

3/4" IPS
3/4" Sch 40 O.D.
Schedule 40 3/4" I.D., 0.188" Wall
Schedule 40 5/8" I.D., 0.158" Wall