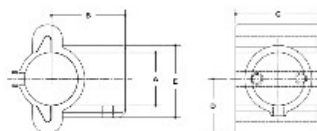


18000 2S-8 Modular Tee Aluminum Magnesium 1-1/2" IPS (1.94" ID)



NOTE: DIMENS ONLY LOCATED IN EDGE RATE CORNER
IF DIMENS IS NOT LOCATED PER DIMENS (SEE TABLE)



#2S Modular Tee
SCALE: 1/2"=1'

#2S Mod	ENGLISH UNITS (INCHES)						METRIC UNITS (MM)					
	A	M	C	D	E	F	A	M	C	D	E	F
1 1/2"	1.68	2.93	2.50	1.94	1.50	2.82	43	75	64	49	38	72
1"	1.24	2.25	2.05	1.75	1.50	2.50	31	57	52	44	38	64

[Click here for chart](#)

BUYRAILINGS
ARCHITECTURAL AND INDUSTRIAL RAILINGS

2" IPS
2.315" Outside O.D.
Schedule 40 2.307" I.D., 0.154" Wall
Schedule 80 2.281" I.D., 0.218" Wall

1 1/2" IPS
1.937" Outside O.D.
Schedule 40 1.929" I.D., 0.140" Wall
Schedule 80 1.903" I.D., 0.204" Wall

1" IPS
1.315" Outside O.D.
Schedule 40 1.307" I.D., 0.140" Wall
Schedule 80 1.281" I.D., 0.194" Wall

3/4" IPS
0.937" Outside O.D.
Schedule 40 0.929" I.D., 0.110" Wall
Schedule 80 0.903" I.D., 0.154" Wall