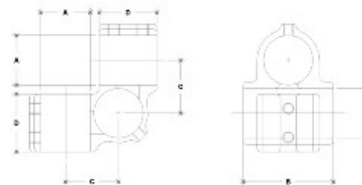


**07740 Rackmaster Aluminum Magnesium 1-1/4" IPS (1.72" ID)**



NOTE: DIMENSIONS LOCATED IN BODIES ARE COMMON  
SECTION DIMENSIONS FOR EACH FITTING



**#102 Rackmaster**

NOTE: INCHES

PIPE SIZE	INCH/ENGLISH UNITS (ENK)							PIPE SIZE	METRIC UNITS (ENK)						
	A	B	C	D	E	F	G		A	B	C	D	E	F	G
1"	1.12	1.12	1.12	1.12	1.12	1.12	1.12	28	28	28	28	28	28	28	28
1 1/4"	1.12	1.12	1.12	1.12	1.12	1.12	1.12	28	28	28	28	28	28	28	28
1 1/2"	1.12	1.12	1.12	1.12	1.12	1.12	1.12	28	28	28	28	28	28	28	28
2"	1.12	1.12	1.12	1.12	1.12	1.12	1.12	28	28	28	28	28	28	28	28

[Click here for chart](#)

**BUYRAILINGS**  
ARCHITECTURAL AND INDUSTRIAL RAILINGS

2" IPS  
2.315" Outside O.D.  
Schedule 40 2.315" I.D. 0.154" Wall  
Schedule 80 1.937" I.D. 0.218" Wall

1 1/2" IPS  
1.915" Outside O.D.  
Schedule 40 1.812" I.D. 0.147" Wall  
Schedule 80 1.434" I.D. 0.202" Wall

1 1/4" IPS  
1.715" Outside O.D.  
Schedule 40 1.587" I.D. 0.140" Wall  
Schedule 80 1.209" I.D. 0.195" Wall

1" IPS  
1.315" Outside O.D.  
Schedule 40 1.202" I.D. 0.132" Wall  
Schedule 80 0.824" I.D. 0.134" Wall