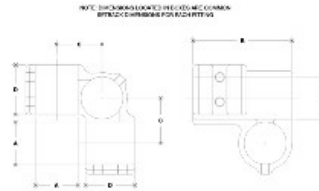


**08730 Rackmaster Aluminum Magnesium 1-1/2" IPS (1.94" ID)**



#100 Rackmaster

PIPE SIZES	DIMENSIONS (inches)								PIPE SIZES	DIMENSIONS (mm)																		
	A	B	C	D	E	F	G	H		I	J	K	L	M	N	O	P	Q	R	S	T	U	V	W	X	Y	Z	
1/2"	1.31	1.31	1.31	1.31	1.31	1.31	1.31	1.31	33.0	33.0	33.0	33.0	33.0	33.0	33.0	33.0	33.0	33.0	33.0	33.0	33.0	33.0	33.0	33.0	33.0	33.0	33.0	
3/4"	1.50	1.50	1.50	1.50	1.50	1.50	1.50	1.50	38.1	38.1	38.1	38.1	38.1	38.1	38.1	38.1	38.1	38.1	38.1	38.1	38.1	38.1	38.1	38.1	38.1	38.1	38.1	
1"	1.75	1.75	1.75	1.75	1.75	1.75	1.75	1.75	44.5	44.5	44.5	44.5	44.5	44.5	44.5	44.5	44.5	44.5	44.5	44.5	44.5	44.5	44.5	44.5	44.5	44.5	44.5	
1 1/2"	2.31	2.31	2.31	2.31	2.31	2.31	2.31	2.31	58.7	58.7	58.7	58.7	58.7	58.7	58.7	58.7	58.7	58.7	58.7	58.7	58.7	58.7	58.7	58.7	58.7	58.7	58.7	
2"	2.87	2.87	2.87	2.87	2.87	2.87	2.87	2.87	73.0	73.0	73.0	73.0	73.0	73.0	73.0	73.0	73.0	73.0	73.0	73.0	73.0	73.0	73.0	73.0	73.0	73.0	73.0	
2 1/2"	3.43	3.43	3.43	3.43	3.43	3.43	3.43	3.43	87.3	87.3	87.3	87.3	87.3	87.3	87.3	87.3	87.3	87.3	87.3	87.3	87.3	87.3	87.3	87.3	87.3	87.3	87.3	87.3
3"	3.99	3.99	3.99	3.99	3.99	3.99	3.99	3.99	101.6	101.6	101.6	101.6	101.6	101.6	101.6	101.6	101.6	101.6	101.6	101.6	101.6	101.6	101.6	101.6	101.6	101.6	101.6	101.6

Click here for chart

**BUYRAILINGS**  
ARCHITECTURAL AND INDUSTRIAL RAILINGS

2" IPS  
2.375" Outer O.D.  
Schedule 40 2.315" I.D. 0.140" Wall  
Schedule 80 1.937" I.D. 0.218" Wall

1.5" IPS  
1.937" Outer O.D.  
Schedule 40 1.875" I.D. 0.140" Wall  
Schedule 80 1.537" I.D. 0.250" Wall

1" IPS  
1.315" Outer O.D.  
Schedule 40 1.261" I.D. 0.140" Wall  
Schedule 80 1.019" I.D. 0.140" Wall

3/4" IPS  
1.062" Outer O.D.  
Schedule 40 1.017" I.D. 0.140" Wall  
Schedule 80 0.775" I.D. 0.140" Wall

1/2" IPS  
0.625" Outer O.D.  
Schedule 40 0.581" I.D. 0.140" Wall  
Schedule 80 0.339" I.D. 0.140" Wall