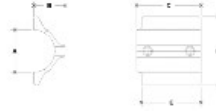


**17190 Modular Cap Male Aluminum Magnesium 1-1/4" IPS (1.72" ID)**



NOTE: DIMENSIONS ARE IN INCHES UNLESS OTHERWISE SPECIFIED IN BRACKETED DIMENSIONS



#99C Modular Cap Male Body

PART NO.	DIMENSIONS (in)						PART NO.	DIMENSIONS (mm)					
	A	B	C	D	E	F		A	B	C	D	E	F
17190	1.72	1.72	1.72	1.72	1.72	1.72	43.7	43.7	43.7	43.7	43.7	43.7	43.7
17191	1.72	1.72	1.72	1.72	1.72	1.72	43.7	43.7	43.7	43.7	43.7	43.7	43.7
17192	1.72	1.72	1.72	1.72	1.72	1.72	43.7	43.7	43.7	43.7	43.7	43.7	43.7
17193	1.72	1.72	1.72	1.72	1.72	1.72	43.7	43.7	43.7	43.7	43.7	43.7	43.7

[Click here for chart](#)

**BUYRAILINGS**  
ARCHITECTURAL AND INDUSTRIAL RAILINGS

2 1/2" IPS  
2.375" O.D.  
Schedule 40 2.375" I.D. 0.188" Wall  
Schedule 80 1.937" I.D. 0.218" Wall

1 1/2" IPS  
1.625" O.D.  
Schedule 40 1.625" I.D. 0.188" Wall  
Schedule 80 1.537" I.D. 0.250" Wall

1 1/4" IPS  
1.500" O.D.  
Schedule 40 1.500" I.D. 0.188" Wall  
Schedule 80 1.275" I.D. 0.188" Wall

1" IPS  
1.315" O.D.  
Schedule 40 1.315" I.D. 0.188" Wall  
Schedule 80 1.207" I.D. 0.174" Wall

3/4" IPS  
1.000" O.D.  
Schedule 40 1.000" I.D. 0.188" Wall  
Schedule 80 0.912" I.D. 0.154" Wall