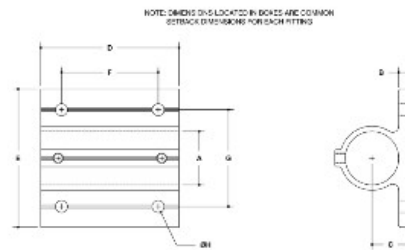
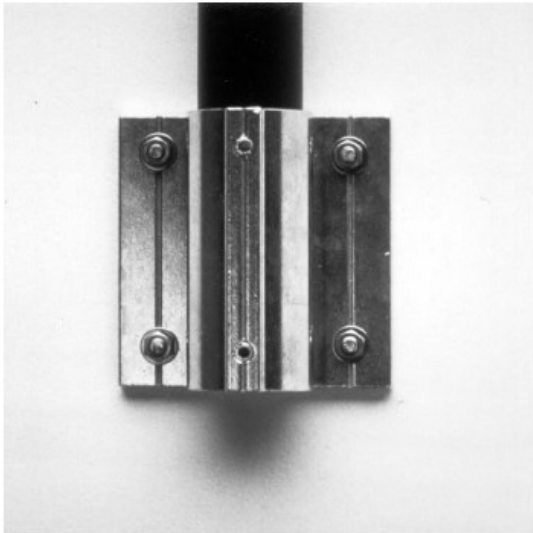


**29300 Extruded Wall Flange (4 Hole) Aluminum Magnesium 2" IPS (2.41" ID)**



**#52E Extruded Heavy-Duty Wall Flange (4-Hole)**

SIZE: E 1-1/2"

MPS SIZE	ENGLISH UNITS (31624A)							METRIC UNITS (31624B)									
	A	M	D	B	F	G	H	J	A	M	D	B	F	G	H	J	
2"	2.64	0.48	1.52	2.20	0.36	2.20	4.58	2.14	26	41	124	41	127	124	50	114	13
4"	1.83	0.55	1.34	2.20	0.26	2.20	3.53	2.14	44	115	24	127	122	50	76	13	
6"	1.65	0.55	1.34	2.20	0.26	2.20	3.53	2.14	44	115	24	127	122	50	76	13	

[Click here for chart](#)

**BUYRAILINGS**  
Architectural and Industrial Railings

2" IPS  
Schedule 40 2.64" O.D. 0.154" Wall  
Schedule 80 2.64" O.D. 0.218" Wall

1.5" IPS  
Schedule 40 1.83" O.D. 0.140" Wall  
Schedule 80 1.83" O.D. 0.203" Wall

1.125" IPS  
Schedule 40 1.380" O.D. 0.140" Wall  
Schedule 80 1.379" O.D. 0.191" Wall

1" IPS  
Schedule 40 1.315" O.D. 0.133" Wall  
Schedule 80 1.315" O.D. 0.177" Wall

3/4" IPS  
Schedule 40 1.050" O.D. 0.119" Wall  
Schedule 80 1.049" O.D. 0.154" Wall