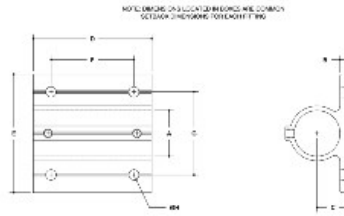
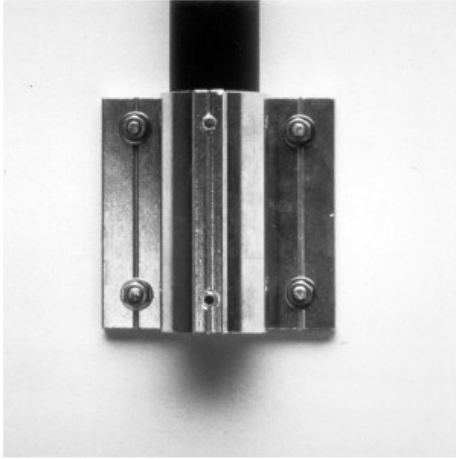


27300 Extruded Wall Flange (4 Hole) Aluminum Magnesium 1-1/4" IPS (1.72" ID)



#52E Extruded Heavy-Duty Wall Flange (4-Hole)

DIMENSIONS IN INCHES										DIMENSIONS IN MILLIMETERS									
SECTION	A	B	C	D	E	F	G	H	I	J	K	L	M	N	O	P	Q	R	S
1 1/4"	1.42	2.04	1.42	1.72	1.72	1.72	1.72	1.72	1.72	1.72	1.72	1.72	1.72	1.72	1.72	1.72	1.72	1.72	1.72
1 1/2"	1.57	2.19	1.57	1.87	1.87	1.87	1.87	1.87	1.87	1.87	1.87	1.87	1.87	1.87	1.87	1.87	1.87	1.87	1.87
1 3/4"	1.72	2.34	1.72	2.02	2.02	2.02	2.02	2.02	2.02	2.02	2.02	2.02	2.02	2.02	2.02	2.02	2.02	2.02	2.02
2"	1.87	2.49	1.87	2.17	2.17	2.17	2.17	2.17	2.17	2.17	2.17	2.17	2.17	2.17	2.17	2.17	2.17	2.17	2.17

[Click here for chart](#)

BUYRAILINGS
EXTRUDED ALUMINUM RAILINGS

2 1/4" IPS
2 1/4" IPS
Schedule #0 2 1/4" I.D., 0 1/4" Wall
Schedule #0 1 3/4" I.D., 0 1/4" Wall

1 1/2" IPS
1 1/2" IPS
Schedule #0 1 1/2" I.D., 0 1/4" Wall
Schedule #0 1 1/2" I.D., 0 252" Wall

1 3/4" IPS
1 3/4" IPS
Schedule #0 1 3/4" I.D., 0 1/4" Wall
Schedule #0 1 3/4" I.D., 0 1/4" Wall

1 1/4" IPS
1 1/4" IPS
Schedule #0 1 1/4" I.D., 0 1/4" Wall
Schedule #0 1 1/4" I.D., 0 1/4" Wall