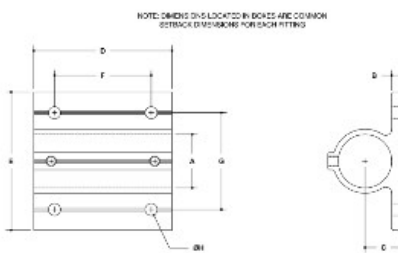
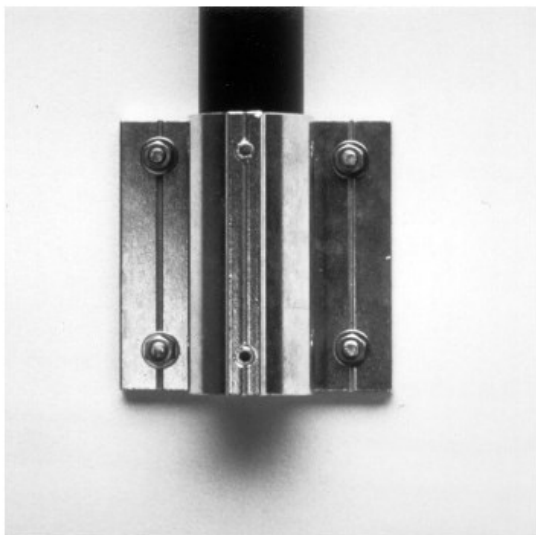


28300 Extruded Wall Flange (4 Hole) Aluminum Magnesium 1-1/2" IPS (1.94" ID)



#52E Extruded Heavy-Duty Wall Flange (4-Hole)

SECTION: 1-1/2"

MPS SIZE	ENGLISH UNITS (31624A)								METRIC UNITS (31624B)									
	A	M	C	D	E	F	G	H	J	A	M	C	D	E	F	G	H	J
2"	2.64	0.48	1.82	2.20	0.36	2.20	4.58	2.14		67	12.4	47	127	152	9.1	114	13	
2 1/2"	3.33	0.55	1.54	2.36	0.36	2.50	3.50	2.14		68	135	54	127	152	9.1	76	13	
3"	3.65	0.55	1.54	2.36	0.36	2.50	3.50	2.14		68	135	54	127	152	9.1	76	13	
3 1/2"	4.65	0.55	1.54	2.36	0.36	2.50	3.50	2.14		68	135	54	127	152	9.1	76	13	

[Click here for chart](#)

BUYRAILINGS
Architectural and Industrial Railings

2" IPS
Schedule 40 2.64" O.D., 0.154" Wall
Schedule 80 2.64" O.D., 0.218" Wall

1 1/2" IPS
Schedule 40 1.94" O.D., 0.140" Wall
Schedule 80 1.94" O.D., 0.203" Wall

1" IPS
Schedule 40 1.315" O.D., 0.140" Wall
Schedule 80 1.315" O.D., 0.181" Wall

3/4" IPS
Schedule 40 0.950" O.D., 0.110" Wall
Schedule 80 0.950" O.D., 0.154" Wall