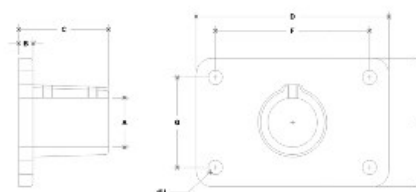


**28490 Heavy-Duty Rect. Base Flange Aluminum Magnesium 1-1/2" IPS (1.94" ID)**



NOTE: DIMENSIONS LOCATED IN BOLD ARE COMMON  
GETTING DIMENSIONS FOR EACH FITTING



**#48BC Heavy-Duty Rectangular Base Flange**

SCALE: 1=1/2"

ENGLISH UNITS (Inches)										METRIC UNITS (mm)									
PIPE SIZE	A	B	C	D	E	F	G	H	J	PIPE SIZE	A	B	C	D	E	F	G	H	J
1 1/2"	2 1/2	3 1/2	4 1/2	5 1/2	6 1/2	7 1/2	8 1/2	9 1/2	10 1/2	41.27	55.88	63.50	71.12	78.74	86.36	93.98	101.60	109.22	116.84

[Click here for chart](#)

**BUYRAILINGS**  
ARCHITECTURAL AND INDUSTRIAL RAILINGS

**2" IPS**  
Schedule 40 2.387" O.D., 0.154" Wall  
Schedule 80 2.387" O.D., 0.218" Wall

**1 1/2" IPS**  
Schedule 40 1.915" O.D., 0.147" Wall  
Schedule 80 1.915" O.D., 0.202" Wall

**1 1/4" IPS**  
Schedule 40 1.380" O.D., 0.147" Wall  
Schedule 80 1.379" O.D., 0.191" Wall

**1" IPS**  
Schedule 40 0.950" O.D., 0.133" Wall  
Schedule 80 0.949" O.D., 0.177" Wall

**3/4" IPS**  
Schedule 40 0.675" O.D., 0.119" Wall  
Schedule 80 0.674" O.D., 0.154" Wall