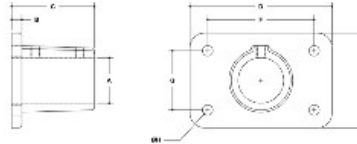


28210 Heavy-Duty Base Flange (4-Hole) Aluminum Magnesium 1-1/2" IPS (1.94" ID)



LOW CARBON ALUMINUM MAGNESIUM
DATE: 01/20/2010 REV: 01/20/2010



#48 Heavy-Duty Base Flange (4-Hole)

IMPERIAL DATA (in-in)										METRIC DATA (mm-mm)									
IPS	A	B	C	D	E	F	G	H	J	K	L	M	N	O	P	Q	R	S	T
1 1/2"	2.00	1.18	2.00	4.50	4.13	4.50	1.13	4.50	1.13	41	30	51	113	113	113	41	30	51	113
1 1/2"	2.11	1.20	2.00	4.50	4.13	4.50	1.13	4.50	1.13	41	30	51	113	113	113	41	30	51	113

[Click here for chart](#)

BUYRAILINGS
ARCHITECTURAL AND INDUSTRIAL RAILINGS

2 1/2" IPS
2 1/2" 50mm O.D.
Schedule 40 2 1/2" I.D. 0.188" Wall
Schedule 80 2 1/2" I.D. 0.218" Wall

1 1/2" IPS
1 1/2" 40mm O.D.
Schedule 40 1 1/2" I.D. 0.188" Wall
Schedule 80 1 1/2" I.D. 0.207" Wall

1 1/2" IPS
1 1/2" 40mm O.D.
Schedule 40 1 1/2" I.D. 0.188" Wall
Schedule 80 1 1/2" I.D. 0.191" Wall

1" IPS
1" 38mm O.D.
Schedule 40 1" I.D. 0.188" Wall
Schedule 80 1" I.D. 0.174" Wall

3/4" IPS
3/4" 38mm O.D.
Schedule 40 3/4" I.D. 0.188" Wall
Schedule 80 3/4" I.D. 0.154" Wall