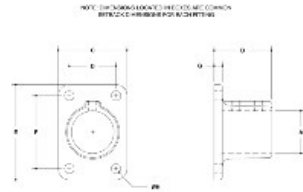


28170 Rectangular Base Flange Aluminum Magnesium 1-1/2" IPS (1.94" ID)



#47 Rectangular Base Flange

IPS (1 1/2")										METRIC (38.1)									
IPS	A	M	K	J	L	F	O	H	I	METRIC	A	M	K	J	L	F	O	H	I
1 1/2"	1.94	1.94	1.94	1.94	1.94	1.94	1.94	1.94	1.94	48.76	48.76	48.76	48.76	48.76	48.76	48.76	48.76	48.76	48.76
2"	2.375	2.375	2.375	2.375	2.375	2.375	2.375	2.375	2.375	60.3	60.3	60.3	60.3	60.3	60.3	60.3	60.3	60.3	60.3
2 1/2"	2.875	2.875	2.875	2.875	2.875	2.875	2.875	2.875	2.875	73.0	73.0	73.0	73.0	73.0	73.0	73.0	73.0	73.0	73.0
3"	3.375	3.375	3.375	3.375	3.375	3.375	3.375	3.375	3.375	85.7	85.7	85.7	85.7	85.7	85.7	85.7	85.7	85.7	85.7
3 1/2"	3.875	3.875	3.875	3.875	3.875	3.875	3.875	3.875	3.875	98.4	98.4	98.4	98.4	98.4	98.4	98.4	98.4	98.4	98.4
4"	4.375	4.375	4.375	4.375	4.375	4.375	4.375	4.375	4.375	111.1	111.1	111.1	111.1	111.1	111.1	111.1	111.1	111.1	111.1
4 1/2"	4.875	4.875	4.875	4.875	4.875	4.875	4.875	4.875	4.875	123.8	123.8	123.8	123.8	123.8	123.8	123.8	123.8	123.8	123.8
5"	5.375	5.375	5.375	5.375	5.375	5.375	5.375	5.375	5.375	136.5	136.5	136.5	136.5	136.5	136.5	136.5	136.5	136.5	136.5
5 1/2"	5.875	5.875	5.875	5.875	5.875	5.875	5.875	5.875	5.875	149.2	149.2	149.2	149.2	149.2	149.2	149.2	149.2	149.2	149.2
6"	6.375	6.375	6.375	6.375	6.375	6.375	6.375	6.375	6.375	161.9	161.9	161.9	161.9	161.9	161.9	161.9	161.9	161.9	161.9
6 1/2"	6.875	6.875	6.875	6.875	6.875	6.875	6.875	6.875	6.875	174.6	174.6	174.6	174.6	174.6	174.6	174.6	174.6	174.6	174.6
7"	7.375	7.375	7.375	7.375	7.375	7.375	7.375	7.375	7.375	187.3	187.3	187.3	187.3	187.3	187.3	187.3	187.3	187.3	187.3
7 1/2"	7.875	7.875	7.875	7.875	7.875	7.875	7.875	7.875	7.875	200.0	200.0	200.0	200.0	200.0	200.0	200.0	200.0	200.0	200.0
8"	8.375	8.375	8.375	8.375	8.375	8.375	8.375	8.375	8.375	212.7	212.7	212.7	212.7	212.7	212.7	212.7	212.7	212.7	212.7
8 1/2"	8.875	8.875	8.875	8.875	8.875	8.875	8.875	8.875	8.875	225.4	225.4	225.4	225.4	225.4	225.4	225.4	225.4	225.4	225.4
9"	9.375	9.375	9.375	9.375	9.375	9.375	9.375	9.375	9.375	238.1	238.1	238.1	238.1	238.1	238.1	238.1	238.1	238.1	238.1
9 1/2"	9.875	9.875	9.875	9.875	9.875	9.875	9.875	9.875	9.875	250.8	250.8	250.8	250.8	250.8	250.8	250.8	250.8	250.8	250.8
10"	10.375	10.375	10.375	10.375	10.375	10.375	10.375	10.375	10.375	263.5	263.5	263.5	263.5	263.5	263.5	263.5	263.5	263.5	263.5

Rectangular Base Flange Aluminum Magnesium 1-1/2" ID

Click here for chart

BUYRAILINGS
ARCHITECTURAL AND INDUSTRIAL RAILINGS

2 1/2" IPS
Schedule 40 2.375" O.D., 0.187" Wall
Schedule 80 2.375" O.D., 0.218" Wall

3" IPS
Schedule 40 3.375" O.D., 0.187" Wall
Schedule 80 3.375" O.D., 0.227" Wall

3 1/2" IPS
Schedule 40 3.875" O.D., 0.187" Wall
Schedule 80 3.875" O.D., 0.218" Wall

4" IPS
Schedule 40 4.375" O.D., 0.187" Wall
Schedule 80 4.375" O.D., 0.218" Wall

4 1/2" IPS
Schedule 40 4.875" O.D., 0.187" Wall
Schedule 80 4.875" O.D., 0.218" Wall

5" IPS
Schedule 40 5.375" O.D., 0.187" Wall
Schedule 80 5.375" O.D., 0.218" Wall

5 1/2" IPS
Schedule 40 5.875" O.D., 0.187" Wall
Schedule 80 5.875" O.D., 0.218" Wall

6" IPS
Schedule 40 6.375" O.D., 0.187" Wall
Schedule 80 6.375" O.D., 0.218" Wall

6 1/2" IPS
Schedule 40 6.875" O.D., 0.187" Wall
Schedule 80 6.875" O.D., 0.218" Wall

7" IPS
Schedule 40 7.375" O.D., 0.187" Wall
Schedule 80 7.375" O.D., 0.218" Wall

7 1/2" IPS
Schedule 40 7.875" O.D., 0.187" Wall
Schedule 80 7.875" O.D., 0.218" Wall

8" IPS
Schedule 40 8.375" O.D., 0.187" Wall
Schedule 80 8.375" O.D., 0.218" Wall

8 1/2" IPS
Schedule 40 8.875" O.D., 0.187" Wall
Schedule 80 8.875" O.D., 0.218" Wall

9" IPS
Schedule 40 9.375" O.D., 0.187" Wall
Schedule 80 9.375" O.D., 0.218" Wall

9 1/2" IPS
Schedule 40 9.875" O.D., 0.187" Wall
Schedule 80 9.875" O.D., 0.218" Wall

10" IPS
Schedule 40 10.375" O.D., 0.187" Wall
Schedule 80 10.375" O.D., 0.218" Wall