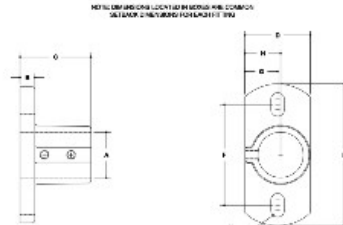


**26140 Base Flange Aluminum Magnesium 1" IPS (1.38" ID)**



**#46 Base Flange**

IMPERIAL UNITS (INCH)													METRIC UNITS (MM)												
PIPE	IPS	A	B	C	D	E	F	G	H	I	J	K	PIPE	IPS	A	B	C	D	E	F	G	H	I	J	K
1 1/2"	40	1.50	2.00	2.50	3.00	3.50	4.00	4.50	5.00	5.50	6.00	6.50	38	40	50	60	70	80	90	100	110	120	130	140	150
1 1/4"	35	1.38	1.88	2.38	2.88	3.38	3.88	4.38	4.88	5.38	5.88	6.38	35	35	45	55	65	75	85	95	105	115	125	135	145
1"	30	1.25	1.75	2.25	2.75	3.25	3.75	4.25	4.75	5.25	5.75	6.25	30	30	40	50	60	70	80	90	100	110	120	130	140
3/4"	25	1.12	1.62	2.12	2.62	3.12	3.62	4.12	4.62	5.12	5.62	6.12	25	25	35	45	55	65	75	85	95	105	115	125	135

[Click here for chart](#)

**BUYRAILINGS**  
ARCHITECTURAL AND INDUSTRIAL RAILINGS

2 1/2" IPS  
Schedule 40 2.375" O.D., 0.188" Wall  
Schedule 80 1.875" I.D., 0.219" Wall

2" IPS  
Schedule 40 1.915" O.D., 0.188" Wall  
Schedule 80 1.415" I.D., 0.250" Wall

1 1/2" IPS  
Schedule 40 1.315" O.D., 0.188" Wall  
Schedule 80 0.815" I.D., 0.250" Wall

1 1/4" IPS  
Schedule 40 1.250" O.D., 0.188" Wall  
Schedule 80 0.750" I.D., 0.250" Wall

1" IPS  
Schedule 40 0.915" O.D., 0.188" Wall  
Schedule 80 0.415" I.D., 0.250" Wall

3/4" IPS  
Schedule 40 0.675" O.D., 0.188" Wall  
Schedule 80 0.175" I.D., 0.250" Wall