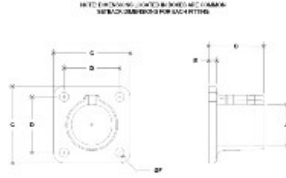


25120 Square Floor Flange Aluminum Magnesium 3/4" IPS (1.09" ID)



#45 Square Base Flange

SIZES	ENGLISH UNITS (in/mm)						METRIC UNITS (mm)																				
	A	B	C	D	E	F	G	H	I	J	K	L	M	N	O	P	Q	R	S	T	U	V	W	X	Y	Z	
1/2"	1.315	1.315	1.315	1.315	1.315	1.315	1.315	1.315	1.315	1.315	1.315	1.315	1.315	1.315	1.315	1.315	1.315	1.315	1.315	1.315	1.315	1.315	1.315	1.315	1.315	1.315	1.315
3/4"	1.625	1.625	1.625	1.625	1.625	1.625	1.625	1.625	1.625	1.625	1.625	1.625	1.625	1.625	1.625	1.625	1.625	1.625	1.625	1.625	1.625	1.625	1.625	1.625	1.625	1.625	1.625
1"	1.935	1.935	1.935	1.935	1.935	1.935	1.935	1.935	1.935	1.935	1.935	1.935	1.935	1.935	1.935	1.935	1.935	1.935	1.935	1.935	1.935	1.935	1.935	1.935	1.935	1.935	1.935
1 1/4"	2.540	2.540	2.540	2.540	2.540	2.540	2.540	2.540	2.540	2.540	2.540	2.540	2.540	2.540	2.540	2.540	2.540	2.540	2.540	2.540	2.540	2.540	2.540	2.540	2.540	2.540	2.540
1 1/2"	3.810	3.810	3.810	3.810	3.810	3.810	3.810	3.810	3.810	3.810	3.810	3.810	3.810	3.810	3.810	3.810	3.810	3.810	3.810	3.810	3.810	3.810	3.810	3.810	3.810	3.810	3.810
2"	5.080	5.080	5.080	5.080	5.080	5.080	5.080	5.080	5.080	5.080	5.080	5.080	5.080	5.080	5.080	5.080	5.080	5.080	5.080	5.080	5.080	5.080	5.080	5.080	5.080	5.080	5.080
2 1/2"	6.350	6.350	6.350	6.350	6.350	6.350	6.350	6.350	6.350	6.350	6.350	6.350	6.350	6.350	6.350	6.350	6.350	6.350	6.350	6.350	6.350	6.350	6.350	6.350	6.350	6.350	6.350
3"	7.620	7.620	7.620	7.620	7.620	7.620	7.620	7.620	7.620	7.620	7.620	7.620	7.620	7.620	7.620	7.620	7.620	7.620	7.620	7.620	7.620	7.620	7.620	7.620	7.620	7.620	7.620
3 1/2"	8.900	8.900	8.900	8.900	8.900	8.900	8.900	8.900	8.900	8.900	8.900	8.900	8.900	8.900	8.900	8.900	8.900	8.900	8.900	8.900	8.900	8.900	8.900	8.900	8.900	8.900	8.900
4"	10.160	10.160	10.160	10.160	10.160	10.160	10.160	10.160	10.160	10.160	10.160	10.160	10.160	10.160	10.160	10.160	10.160	10.160	10.160	10.160	10.160	10.160	10.160	10.160	10.160	10.160	10.160
4 1/2"	11.430	11.430	11.430	11.430	11.430	11.430	11.430	11.430	11.430	11.430	11.430	11.430	11.430	11.430	11.430	11.430	11.430	11.430	11.430	11.430	11.430	11.430	11.430	11.430	11.430	11.430	11.430
5"	12.700	12.700	12.700	12.700	12.700	12.700	12.700	12.700	12.700	12.700	12.700	12.700	12.700	12.700	12.700	12.700	12.700	12.700	12.700	12.700	12.700	12.700	12.700	12.700	12.700	12.700	12.700
5 1/2"	13.970	13.970	13.970	13.970	13.970	13.970	13.970	13.970	13.970	13.970	13.970	13.970	13.970	13.970	13.970	13.970	13.970	13.970	13.970	13.970	13.970	13.970	13.970	13.970	13.970	13.970	13.970
6"	15.240	15.240	15.240	15.240	15.240	15.240	15.240	15.240	15.240	15.240	15.240	15.240	15.240	15.240	15.240	15.240	15.240	15.240	15.240	15.240	15.240	15.240	15.240	15.240	15.240	15.240	15.240
6 1/2"	16.510	16.510	16.510	16.510	16.510	16.510	16.510	16.510	16.510	16.510	16.510	16.510	16.510	16.510	16.510	16.510	16.510	16.510	16.510	16.510	16.510	16.510	16.510	16.510	16.510	16.510	16.510
7"	17.780	17.780	17.780	17.780	17.780	17.780	17.780	17.780	17.780	17.780	17.780	17.780	17.780	17.780	17.780	17.780	17.780	17.780	17.780	17.780	17.780	17.780	17.780	17.780	17.780	17.780	17.780
7 1/2"	19.050	19.050	19.050	19.050	19.050	19.050	19.050	19.050	19.050	19.050	19.050	19.050	19.050	19.050	19.050	19.050	19.050	19.050	19.050	19.050	19.050	19.050	19.050	19.050	19.050	19.050	19.050
8"	20.320	20.320	20.320	20.320	20.320	20.320	20.320	20.320	20.320	20.320	20.320	20.320	20.320	20.320	20.320	20.320	20.320	20.320	20.320	20.320	20.320	20.320	20.320	20.320	20.320	20.320	20.320
8 1/2"	21.590	21.590	21.590	21.590	21.590	21.590	21.590	21.590	21.590	21.590	21.590	21.590	21.590	21.590	21.590	21.590	21.590	21.590	21.590	21.590	21.590	21.590	21.590	21.590	21.590	21.590	21.590
9"	22.860	22.860	22.860	22.860	22.860	22.860	22.860	22.860	22.860	22.860	22.860	22.860	22.860	22.860	22.860	22.860	22.860	22.860	22.860	22.860	22.860	22.860	22.860	22.860	22.860	22.860	22.860
9 1/2"	24.130	24.130	24.130	24.130	24.130	24.130	24.130	24.130	24.130	24.130	24.130	24.130	24.130	24.130	24.130	24.130	24.130	24.130	24.130	24.130	24.130	24.130	24.130	24.130	24.130	24.130	24.130
10"	25.400	25.400	25.400	25.400	25.400	25.400	25.400	25.400	25.400	25.400	25.400	25.400	25.400	25.400	25.400	25.400	25.400	25.400	25.400	25.400	25.400	25.400	25.400	25.400	25.400	25.400	25.400

Click here for chart

BUYRAILINGS
ARCHITECTURAL AND INDUSTRIAL RAILINGS

IPS (Iron Pipe Size) Chart:

- 2 1/2" IPS: 2.375" Outer D.D., Schedule 40: 0.280" Wall, Schedule 80: 0.375" Wall
- 3" IPS: 3.000" Outer D.D., Schedule 40: 0.300" Wall, Schedule 80: 0.400" Wall
- 3 1/2" IPS: 3.625" Outer D.D., Schedule 40: 0.325" Wall, Schedule 80: 0.425" Wall
- 4" IPS: 4.250" Outer D.D., Schedule 40: 0.350" Wall, Schedule 80: 0.450" Wall
- 4 1/2" IPS: 4.875" Outer D.D., Schedule 40: 0.375" Wall, Schedule 80: 0.475" Wall
- 5" IPS: 5.500" Outer D.D., Schedule 40: 0.400" Wall, Schedule 80: 0.500" Wall
- 5 1/2" IPS: 6.125" Outer D.D., Schedule 40: 0.425" Wall, Schedule 80: 0.525" Wall
- 6" IPS: 6.750" Outer D.D., Schedule 40: 0.450" Wall, Schedule 80: 0.550" Wall
- 6 1/2" IPS: 7.375" Outer D.D., Schedule 40: 0.475" Wall, Schedule 80: 0.575" Wall
- 7" IPS: 8.000" Outer D.D., Schedule 40: 0.500" Wall, Schedule 80: 0.600" Wall
- 7 1/2" IPS: 8.625" Outer D.D., Schedule 40: 0.525" Wall, Schedule 80: 0.625" Wall
- 8" IPS: 9.250" Outer D.D., Schedule 40: 0.550" Wall, Schedule 80: 0.650" Wall
- 8 1/2" IPS: 9.875" Outer D.D., Schedule 40: 0.575" Wall, Schedule 80: 0.675" Wall
- 9" IPS: 10.500" Outer D.D., Schedule 40: 0.600" Wall, Schedule 80: 0.700" Wall
- 9 1/2" IPS: 11.125" Outer D.D., Schedule 40: 0.625" Wall, Schedule 80: 0.725" Wall
- 10" IPS: 11.750" Outer D.D., Schedule 40: 0.650" Wall, Schedule 80: 0.750" Wall