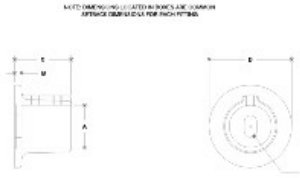


**28100 Round Wall Flange Aluminum Magnesium 1-1/2" IPS (1.94" ID)**



#43 Round Wall Flange

PIPE SIZE	DIMENSIONS (IPS) in-in						PIPE WALL THICKNESS	DIMENSIONS (MM) mm-mm						
	A	B	C	D	E	F		A	B	C	D	E	F	
1/2"	1.5	1.5	1.5	1.5	1.5	1.5	0.083	38.1	38.1	38.1	38.1	38.1	38.1	38.1
3/4"	1.75	1.75	1.75	1.75	1.75	1.75	0.083	44.45	44.45	44.45	44.45	44.45	44.45	44.45
1"	1.9	1.9	1.9	1.9	1.9	1.9	0.083	48.26	48.26	48.26	48.26	48.26	48.26	48.26
1 1/2"	2.375	2.375	2.375	2.375	2.375	2.375	0.083	60.3	60.3	60.3	60.3	60.3	60.3	60.3

Click here for chart

**BUYRAILINGS**  
ARCHITECTURAL AND INDUSTRIAL RAILINGS

2 1/2" IPS  
Schedule 40 2.375" O.D., 0.188" Wall  
Schedule 80 2.375" O.D., 0.219" Wall

2" IPS  
Schedule 40 2.0" O.D., 0.153" Wall  
Schedule 80 2.0" O.D., 0.178" Wall

1 1/2" IPS  
Schedule 40 1.94" O.D., 0.133" Wall  
Schedule 80 1.94" O.D., 0.153" Wall

1" IPS  
Schedule 40 1.315" O.D., 0.109" Wall  
Schedule 80 1.315" O.D., 0.125" Wall

3/4" IPS  
Schedule 40 1.315" O.D., 0.109" Wall  
Schedule 80 1.315" O.D., 0.125" Wall

1/2" IPS  
Schedule 40 1.315" O.D., 0.109" Wall  
Schedule 80 1.315" O.D., 0.125" Wall