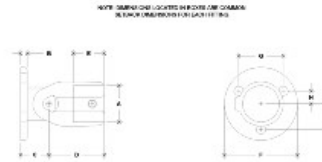


28050 Adj. Flange (Wall Only) Aluminum Magnesium 1-1/2" IPS (1.94" ID)



#41 Adjustable Flange (Wall Mount Only)

PIPE SIZE	FRONT VIEW DIMENSIONS							SIDE VIEW DIMENSIONS										
	A	B	C	D	E	F	G	H	J	A	B	C	D	E	F	G	H	J
1 1/2"	1.94	1.94	1.94	1.94	1.94	1.94	1.94	1.94	1.94	1.94	1.94	1.94	1.94	1.94	1.94	1.94	1.94	1.94
1 1/2"	1.94	1.94	1.94	1.94	1.94	1.94	1.94	1.94	1.94	1.94	1.94	1.94	1.94	1.94	1.94	1.94	1.94	1.94
1 1/2"	1.94	1.94	1.94	1.94	1.94	1.94	1.94	1.94	1.94	1.94	1.94	1.94	1.94	1.94	1.94	1.94	1.94	1.94

[Click here for chart](#)

BUYRAILINGS
ARCHITECTURAL AND INDUSTRIAL RAILINGS

2 1/2" IPS
2 1/2" IPS
Schedule 40 2 1/2" I.D., 0.187" Wall
Schedule 80 2 1/2" I.D., 0.218" Wall

1 1/2" IPS
1 1/2" IPS
Schedule 40 1 1/2" I.D., 0.147" Wall
Schedule 80 1 1/2" I.D., 0.181" Wall

1 1/2" IPS
1 1/2" IPS
Schedule 40 1 1/2" I.D., 0.147" Wall
Schedule 80 1 1/2" I.D., 0.181" Wall

1 1/2" IPS
1 1/2" IPS
Schedule 40 1 1/2" I.D., 0.147" Wall
Schedule 80 1 1/2" I.D., 0.181" Wall

1 1/2" IPS
1 1/2" IPS
Schedule 40 1 1/2" I.D., 0.147" Wall
Schedule 80 1 1/2" I.D., 0.181" Wall