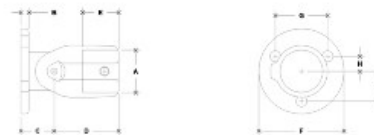


26040 Adj. Flange (Wall Only) Aluminum Magnesium 1" IPS (1.38" ID)



NOTE: DIMENSIONS ARE LOCATED IN RED AND ARE COMMON
METRICAL DIMENSIONS FOR EACH FITTING



#41 Adjustable Flange (Wall Mount Only)

SCALE: 1/4"=1"

| ENGLISH UNITS (IN/FR) | | | | | | | | | | METRIC UNITS (MM) | | | | | | | | | |
|-----------------------|------|------|------|------|------|------|------|------|------|-------------------|------|------|------|------|------|------|------|------|------|
| PIPE SIZE | A | B | C | D | E | F | G | H | J | PIPE SIZE | A | B | C | D | E | F | G | H | J |
| 1/2" | 1.12 | 1.00 | 1.12 | 1.12 | 1.00 | 1.12 | 1.12 | 1.00 | 1.12 | 12.7 | 25.4 | 25.4 | 25.4 | 25.4 | 25.4 | 25.4 | 25.4 | 25.4 | 25.4 |
| 3/4" | 1.46 | 1.31 | 1.46 | 1.46 | 1.31 | 1.46 | 1.46 | 1.31 | 1.46 | 16.5 | 33.3 | 33.3 | 33.3 | 33.3 | 33.3 | 33.3 | 33.3 | 33.3 | 33.3 |
| 1" | 1.81 | 1.68 | 1.81 | 1.81 | 1.68 | 1.81 | 1.81 | 1.68 | 1.81 | 19.0 | 41.9 | 41.9 | 41.9 | 41.9 | 41.9 | 41.9 | 41.9 | 41.9 | 41.9 |
| 1 1/4" | 2.07 | 1.94 | 2.07 | 2.07 | 1.94 | 2.07 | 2.07 | 1.94 | 2.07 | 21.6 | 47.8 | 47.8 | 47.8 | 47.8 | 47.8 | 47.8 | 47.8 | 47.8 | 47.8 |

Item 26040 is made of aluminum-magnesium alloy 535 and includes one screw to hold the pipe in place. It is designed to hold 1" IPS pipe (see item A100ID).

- **Wall Mount Only - Non-Structural**
- Quick and easy way to assemble structural pipe systems
- Reduce labor costs by 70%
- 100% reusable
- No welding or threading
- No drilling or bolting