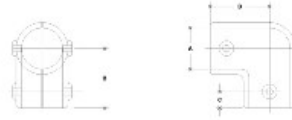


**38800 Mend-A-Rail Elbow Aluminum Magnesium 1-1/2" IPS (1.94" ID)**



NOTE DIMENSIONS LISTED IN INCHES ARE STANDARD  
(SEE TECHNICAL DRAWING FOR DIMENSIONS)



**#300 Mend-A-Rail Elbow**  
1/2" IPS

#300 Mend-A-Rail Elbow								#300 Mend-A-Rail Elbow								
IPS SIZE	A	B	C	D	E	F	G	IPS SIZE	A	B	C	D	E	F	G	
1/2"	1.125	1.125	1.125	1.125	1.125	1.125	1.125	1/2"	1.125	1.125	1.125	1.125	1.125	1.125	1.125	1.125
3/4"	1.375	1.375	1.375	1.375	1.375	1.375	1.375	3/4"	1.375	1.375	1.375	1.375	1.375	1.375	1.375	1.375
1"	1.625	1.625	1.625	1.625	1.625	1.625	1.625	1"	1.625	1.625	1.625	1.625	1.625	1.625	1.625	1.625
1 1/4"	2.125	2.125	2.125	2.125	2.125	2.125	2.125	1 1/4"	2.125	2.125	2.125	2.125	2.125	2.125	2.125	2.125
1 1/2"	2.375	2.375	2.375	2.375	2.375	2.375	2.375	1 1/2"	2.375	2.375	2.375	2.375	2.375	2.375	2.375	2.375
2"	2.875	2.875	2.875	2.875	2.875	2.875	2.875	2"	2.875	2.875	2.875	2.875	2.875	2.875	2.875	2.875
2 1/2"	3.375	3.375	3.375	3.375	3.375	3.375	3.375	2 1/2"	3.375	3.375	3.375	3.375	3.375	3.375	3.375	3.375
3"	3.875	3.875	3.875	3.875	3.875	3.875	3.875	3"	3.875	3.875	3.875	3.875	3.875	3.875	3.875	3.875
3 1/2"	4.375	4.375	4.375	4.375	4.375	4.375	4.375	3 1/2"	4.375	4.375	4.375	4.375	4.375	4.375	4.375	4.375
4"	4.875	4.875	4.875	4.875	4.875	4.875	4.875	4"	4.875	4.875	4.875	4.875	4.875	4.875	4.875	4.875
4 1/2"	5.375	5.375	5.375	5.375	5.375	5.375	5.375	4 1/2"	5.375	5.375	5.375	5.375	5.375	5.375	5.375	5.375
5"	5.875	5.875	5.875	5.875	5.875	5.875	5.875	5"	5.875	5.875	5.875	5.875	5.875	5.875	5.875	5.875
5 1/2"	6.375	6.375	6.375	6.375	6.375	6.375	6.375	5 1/2"	6.375	6.375	6.375	6.375	6.375	6.375	6.375	6.375
6"	6.875	6.875	6.875	6.875	6.875	6.875	6.875	6"	6.875	6.875	6.875	6.875	6.875	6.875	6.875	6.875
6 1/2"	7.375	7.375	7.375	7.375	7.375	7.375	7.375	6 1/2"	7.375	7.375	7.375	7.375	7.375	7.375	7.375	7.375
7"	7.875	7.875	7.875	7.875	7.875	7.875	7.875	7"	7.875	7.875	7.875	7.875	7.875	7.875	7.875	7.875
7 1/2"	8.375	8.375	8.375	8.375	8.375	8.375	8.375	7 1/2"	8.375	8.375	8.375	8.375	8.375	8.375	8.375	8.375
8"	8.875	8.875	8.875	8.875	8.875	8.875	8.875	8"	8.875	8.875	8.875	8.875	8.875	8.875	8.875	8.875
8 1/2"	9.375	9.375	9.375	9.375	9.375	9.375	9.375	8 1/2"	9.375	9.375	9.375	9.375	9.375	9.375	9.375	9.375
9"	9.875	9.875	9.875	9.875	9.875	9.875	9.875	9"	9.875	9.875	9.875	9.875	9.875	9.875	9.875	9.875
9 1/2"	10.375	10.375	10.375	10.375	10.375	10.375	10.375	9 1/2"	10.375	10.375	10.375	10.375	10.375	10.375	10.375	10.375
10"	10.875	10.875	10.875	10.875	10.875	10.875	10.875	10"	10.875	10.875	10.875	10.875	10.875	10.875	10.875	10.875

Two-part fitting designed to fit around an existing corner installation of tube.

Used to replace an elbow that has been damaged or removed after an assembly has already been built.