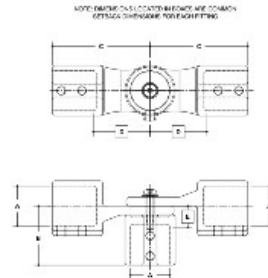


07570 Adj. Side Outlet Elbow Aluminum Magnesium 1-1/4" IPS (1.72" ID)



#29 Adjustable Side Outlet Elbow
SCALE: 1:1

#29 ADJ. SIDE OUTLET ELBOW										#29 ADJ. SIDE OUTLET ELBOW									
IPS	A	B	C	D	E	F	G	H	I	J	K	L	M	N	O	P	Q	R	S
1 1/4"	1.0	1.0	1.0	1.0	1.0	1.0	1.0	1.0	1.0	1.0	1.0	1.0	1.0	1.0	1.0	1.0	1.0	1.0	1.0

[Click here for chart](#)

BUYRAILINGS
ARCHITECTURAL AND INDUSTRIAL RAILINGS

1/2" IPS
Schedule 40 2.315" O.D., 0.148" Wall
Schedule 80 1.937" I.D., 0.218" Wall

3/4" IPS
Schedule 40 2.875" O.D., 0.148" Wall
Schedule 80 2.487" I.D., 0.218" Wall

1" IPS
Schedule 40 3.500" O.D., 0.148" Wall
Schedule 80 3.063" I.D., 0.218" Wall

1 1/4" IPS
Schedule 40 4.375" O.D., 0.148" Wall
Schedule 80 3.813" I.D., 0.218" Wall

1 1/2" IPS
Schedule 40 5.000" O.D., 0.148" Wall
Schedule 80 4.375" I.D., 0.218" Wall

2" IPS
Schedule 40 6.625" O.D., 0.148" Wall
Schedule 80 5.938" I.D., 0.218" Wall

3" IPS
Schedule 40 8.250" O.D., 0.148" Wall
Schedule 80 7.250" I.D., 0.218" Wall