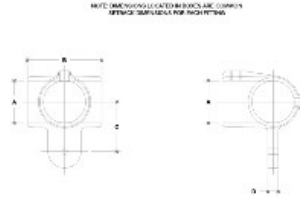


06430 Adj. Side Outlet or Tee Male Aluminum Magnesium 1" IPS (1.38" ID)



#25M Side Outlet Adjustable Elbow or Tee Male Body

FINISH	DIMENSIONS (IPS) (in)								DIMENSIONS (METRIC) (mm)																		
	A	B	C	D	E	F	G	H	I	J	K	L	M	N	O	P	Q	R	S	T	U	V	W	X	Y	Z	
PS	1.00	1.38	1.38	1.38	1.38	1.38	1.38	1.38	1.38	1.38	1.38	1.38	1.38	1.38	1.38	1.38	1.38	1.38	1.38	1.38	1.38	1.38	1.38	1.38	1.38	1.38	1.38
PS	1.00	1.38	1.38	1.38	1.38	1.38	1.38	1.38	1.38	1.38	1.38	1.38	1.38	1.38	1.38	1.38	1.38	1.38	1.38	1.38	1.38	1.38	1.38	1.38	1.38	1.38	1.38
PS	1.00	1.38	1.38	1.38	1.38	1.38	1.38	1.38	1.38	1.38	1.38	1.38	1.38	1.38	1.38	1.38	1.38	1.38	1.38	1.38	1.38	1.38	1.38	1.38	1.38	1.38	1.38

[Click here for chart](#)

BUYRAILINGS
ARCHITECTURAL AND INDUSTRIAL RAILINGS

2 1/2" IPS
Schedule 40 2.375" O.D., 0.188" Wall
Schedule 80 2.375" O.D., 0.218" Wall

1 1/2" IPS
Schedule 40 1.625" O.D., 0.148" Wall
Schedule 80 1.625" O.D., 0.207" Wall

1 1/4" IPS
Schedule 40 1.500" O.D., 0.147" Wall
Schedule 80 1.500" O.D., 0.181" Wall

1" IPS
Schedule 40 1.315" O.D., 0.133" Wall
Schedule 80 1.315" O.D., 0.174" Wall

3/4" IPS
Schedule 40 1.000" O.D., 0.113" Wall
Schedule 80 1.000" O.D., 0.154" Wall