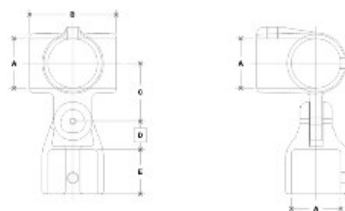


08420 Side Outlet Adj. Elbow or Tee Aluminum Magnesium 1-1/2" IPS (1.94" ID)



NOTE: DIMENSIONS LOCATED IN BOLD ARE COMMON
DIMENSIONS FOR EACH ITEM



#25 Side Outlet Adjustable Elbow or Tee

SCALE: NPL

PIPE SIZE	ENGLISH UNITS (IN-DEC)							PIPE SIZE	METRIC UNITS (MM)						
	A	B	C	D	E	F	G		A	B	C	D	E	F	G
1 1/2"	15	26	22	113	113			381	660	559	2874	2874			
1 1/4"	14	25	21	111	111			354	635	533	2826	2826			
1"	12	21	17	91	91			305	508	430	2318	2318			
3/4"	10	18	14	73	73			254	427	354	1854	1854			

[Click here for chart](#)

BUYRAILINGS
ARCHITECTURAL AND INDUSTRIAL RAILINGS

2" IPS
2.315" Outside O.D.
Schedule 40 2.387" I.D. 0.154" Wall
Schedule 80 1.937" I.D. 0.218" Wall

1 1/2" IPS
1.915" Outside O.D.
Schedule 40 1.987" I.D. 0.147" Wall
Schedule 80 1.537" I.D. 0.202" Wall

1 1/4" IPS
1.665" Outside O.D.
Schedule 40 1.737" I.D. 0.147" Wall
Schedule 80 1.277" I.D. 0.191" Wall

1" IPS
1.315" Outside O.D.
Schedule 40 1.387" I.D. 0.137" Wall
Schedule 80 0.987" I.D. 0.174" Wall

3/4" IPS
1.065" Outside O.D.
Schedule 40 1.137" I.D. 0.137" Wall
Schedule 80 0.747" I.D. 0.154" Wall