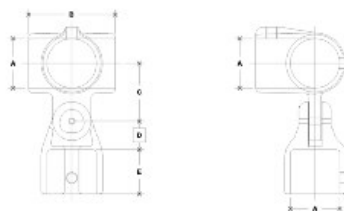


05420 Side Outlet Adj. Elbow or Tee Aluminum Magnesium 3/4" IPS (1.09" ID)



NOTE: DIMENSIONS LOCATED IN BOLD ARE COMMON
DIMENSIONS FOR EACH ITEM



#25 Side Outlet Adjustable Elbow or Tee

SCALE: NPL

PIPE SIZE	ENGLISH UNITS (IN/INCH)						PIPE SIZE	METRIC UNITS (MM)							
	A	B	C	D	E	F		G	A	B	C	D	E	F	G
1/2"	1.12	1.38	2.25	1.13	1.12			28	35	57	29	28			
3/4"	1.64	1.70	1.74	1.13	1.12			42	43	44	29	28			
1"	2.14	2.28	1.93	1.09	1.09			54	58	49	28	28			
1 1/4"	3.07	3.08	1.93	1.09	1.09			78	78	49	28	28			

[Click here for chart](#)

BUYRAILINGS
ARCHITECTURAL AND INDUSTRIAL RAILINGS

2" IPS
2.315" Outside O.D.
Schedule 40 2.267" I.D. 0.154" Wall
Schedule 80 1.987" I.D. 0.218" Wall

1 1/2" IPS
1.915" Outside O.D.
Schedule 40 1.817" I.D. 0.147" Wall
Schedule 80 1.597" I.D. 0.207" Wall

1" IPS
1.315" Outside O.D.
Schedule 40 1.267" I.D. 0.147" Wall
Schedule 80 1.179" I.D. 0.191" Wall

3/4" IPS
1.060" Outside O.D.
Schedule 40 1.007" I.D. 0.113" Wall
Schedule 80 0.914" I.D. 0.154" Wall

1.000" Outside O.D.