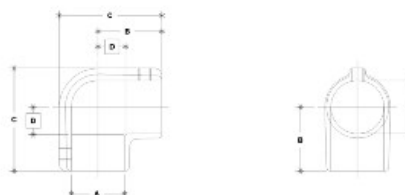


09020 3-9 Elbow Aluminum Magnesium 2" IPS (2.41" ID)



NOTE: DIMENSIONS LOCATED IN BOXES ARE COMMON SETBACK DIMENSIONS FOR EACH FITTING



#3 Elbow

SCALE: NPL

IMPERIAL UNITS (in x in)								METRIC UNITS (mm x mm)							
PIPE SIZE	A	B	C	D	E	F	G	PIPE SIZE	A	B	C	D	E	F	G
3/4"	1.49	3.02	4.94	1.25				38	77	125	32	32			
1"	1.82	3.52	5.25	1.50				46	89	133	38	38			
1 1/4"	1.95	4.00	5.75	1.69				49	102	146	43	43			
1 1/2"	2.25	4.25	6.00	1.88				57	108	152	48	48			
2"	2.50	4.75	6.50	2.13				64	119	165	54	54			

The Speed-Rail® 90 Degree Elbow is made of cast aluminum-magnesium alloy 535 and is available for pipe sizes 3/4", 1", 1-1/4", 1-1/2", and 2".

Each 90 Degree Elbow comes with two set screws that are zinc plated per ASTM B633 followed by trivalent conversion and JS600 top coat.

Special order options include anodized and powder coat finishes and also stainless steel set screws.