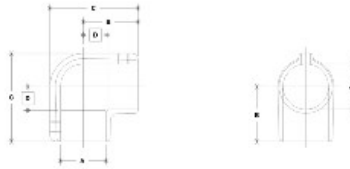


08020 Elbow Aluminum Magnesium 1-1/2" IPS (1.94" ID)



NOTE: DIMENSIONS LISTED IN BOLDS ARE DIMENSIONS
BY MANUFACTURER'S PRACTICES



#3 Elbow

| PIPE SIZE | DIMENSIONS (inches) | | | | | | | DIMENSIONS (mm) | | | | | | | |
|-----------|---------------------|------|------|------|------|------|------|-----------------|-------|-------|-------|-------|-------|-------|-------|
| | A | B | C | D | E | F | G | A | B | C | D | E | F | G | |
| 1/2" | 1.12 | 2.00 | 1.12 | 1.25 | 1.12 | 1.12 | 1.12 | 28.25 | 50.80 | 28.25 | 31.75 | 28.25 | 28.25 | 28.25 | 28.25 |
| 3/4" | 1.12 | 2.00 | 1.12 | 1.25 | 1.12 | 1.12 | 1.12 | 28.25 | 50.80 | 28.25 | 31.75 | 28.25 | 28.25 | 28.25 | 28.25 |
| 1" | 1.12 | 2.00 | 1.12 | 1.25 | 1.12 | 1.12 | 1.12 | 28.25 | 50.80 | 28.25 | 31.75 | 28.25 | 28.25 | 28.25 | 28.25 |
| 1 1/2" | 1.12 | 2.00 | 1.12 | 1.25 | 1.12 | 1.12 | 1.12 | 28.25 | 50.80 | 28.25 | 31.75 | 28.25 | 28.25 | 28.25 | 28.25 |
| 2" | 1.12 | 2.00 | 1.12 | 1.25 | 1.12 | 1.12 | 1.12 | 28.25 | 50.80 | 28.25 | 31.75 | 28.25 | 28.25 | 28.25 | 28.25 |

[Click here for chart](#)

BUYRAILINGS
ARCHITECTURAL AND INDUSTRIAL RAILINGS

2" IPS
2.375" Outer O.D.
Schedule 40 2.375" I.D. 0.140" Wall
Schedule 80 1.937" I.D. 0.218" Wall

1 1/2" IPS
1.937" Outer O.D.
Schedule 40 1.613" I.D. 0.140" Wall
Schedule 80 1.337" I.D. 0.257" Wall

1" IPS
1.312" Outer O.D.
Schedule 40 1.000" I.D. 0.140" Wall
Schedule 80 0.724" I.D. 0.179" Wall

3/4" IPS
1.000" Outer O.D.
Schedule 40 0.687" I.D. 0.140" Wall
Schedule 80 0.411" I.D. 0.154" Wall