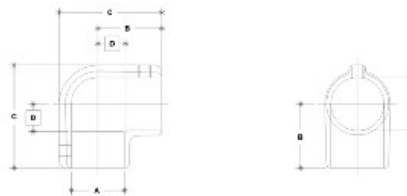


06020 3-6 Elbow Aluminum Magnesium 1" IPS (1.38" ID)



NOTE: DIMENSIONS LOCATED IN BODIES ARE COMMON SETBACK DIMENSIONS FOR EACH FITTING



#3 Elbow

SCALE: NPL

RAILING UNITS (in./mm)								METRIC UNITS (mm)							
PIPE SIZE	A	B	C	D	E	F	G	PIPE SIZE	A	B	C	D	E	F	G
2"	7.49	32.0	4.91	1.25				2"	191	813	125	32			
1 1/2"	5.83	25.0	4.15	1.00				1 1/2"	149	635	105	25			
1"	4.33	20.0	3.50	0.75				1"	110	508	89	19			
3/4"	3.50	16.0	2.88	0.63				3/4"	89	406	73	16			

Speed-Rail® item# 06020 90 Degree Elbow is made of cast aluminum-magnesium alloy 535 and is designed to fit with 1" pipe.

This item comes with two set screws that are zinc plated per ASTM B633 followed by trivalent conversion and JS600 top coat.

Special order options include anodized and powder coat finishes and also stainless steel set screws.