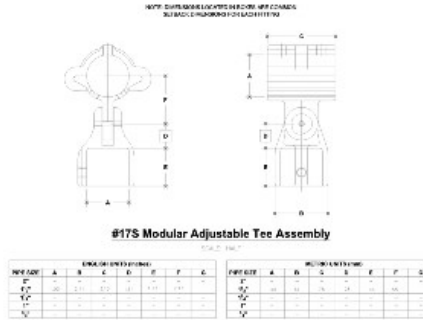
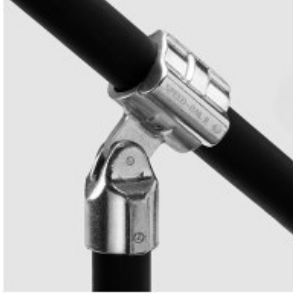


**18060 Modular Adj. Tee Assembly Aluminum Magnesium 1-1/2" IPS (1.94" ID)**



[Click here for chart](#)

**BUYRAILINGS**  
EVALUATED FOR ARCHITECTURAL RAILINGS

2 1/2" IPS  
Schedule 40 2.375" O.D. 0.148" Wall  
Schedule 80 1.937" O.D. 0.218" Wall

1 1/2" IPS  
Schedule 40 1.937" O.D. 0.148" Wall  
Schedule 80 1.500" O.D. 0.250" Wall

1" IPS  
Schedule 40 1.315" O.D. 0.133" Wall  
Schedule 80 1.062" O.D. 0.179" Wall

3/4" IPS  
Schedule 40 1.062" O.D. 0.133" Wall  
Schedule 80 0.812" O.D. 0.154" Wall