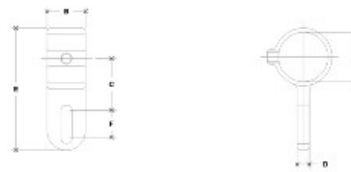


08390 Extended Tab Aluminum Magnesium 1-1/2" IPS (1.94" ID)



NOTE: DIMENSIONS IN LIGATURES IN RED ARE COMMON
STANDARD DIMENSIONS FOR EACH FITTING



#17MA Extended Tab

ENGLISH UNITS (IN/MM)							METRIC UNITS (MM)								
PIPE SIZE	A	D	G	D	E	F	G	PIPE SIZE	A	D	G	D	E	F	G
1 1/2"	1.25	1.25	1.25	1.25	1.25	1.25	1.25	32"	31.75	31.75	31.75	31.75	31.75	31.75	31.75

[Click here for chart](#)

BUYRAILINGS
ARCHITECTURAL AND INDUSTRIAL RAILINGS

2" IPS
Schedule 40 2.375" O.D., 0.154" Wall
Schedule 80 2.375" O.D., 0.218" Wall

1 1/2" IPS
Schedule 40 1.915" O.D., 0.147" Wall
Schedule 80 1.915" O.D., 0.207" Wall

1 1/4" IPS
Schedule 40 1.762" O.D., 0.147" Wall
Schedule 80 1.762" O.D., 0.191" Wall

1 1/8" IPS
Schedule 40 1.625" O.D., 0.147" Wall
Schedule 80 1.625" O.D., 0.191" Wall

1" IPS
Schedule 40 1.315" O.D., 0.133" Wall
Schedule 80 1.315" O.D., 0.154" Wall

3/4" IPS
Schedule 40 1.062" O.D., 0.113" Wall
Schedule 80 1.062" O.D., 0.154" Wall