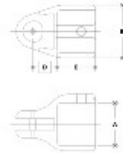


09270 Adj. Elbow or Tee Female Body Aluminum Magnesium 2" IPS (2.41" ID)



NOTE: DIMENSIONS LISTED IN BRACKETED DIMENSIONS
ARE TO BE USED FOR MOUNTING



#17F Adjustable Elbow or Tee Female Body

PIPE SIZE	DIMENSIONS (INCH)						PIPE SIZES	DIMENSIONS (MILLIMETER)					
	A	B	C	E	F	G		A	B	C	E	F	G
2"	1.12	1.00	1.12	1.12	1.12	1.12	28.5	25.4	28.5	28.5	28.5	28.5	28.5
1 1/2"	0.87	0.75	0.87	0.87	0.87	0.87	22.1	19.0	22.1	22.1	22.1	22.1	22.1
1 1/4"	0.75	0.63	0.75	0.75	0.75	0.75	19.0	16.0	19.0	19.0	19.0	19.0	19.0
1 1/8"	0.63	0.51	0.63	0.63	0.63	0.63	16.0	13.0	16.0	16.0	16.0	16.0	16.0
1"	0.51	0.39	0.51	0.51	0.51	0.51	13.0	10.0	13.0	13.0	13.0	13.0	13.0
3/4"	0.39	0.27	0.39	0.39	0.39	0.39	10.0	7.0	10.0	10.0	10.0	10.0	10.0

[Click here for chart](#)

BUYRAILINGS
EQUIPMENT FOR RAILINGS

2" IPS
Schedule 40 2.375" O.D., 0.188" Wall
Schedule 80 1.937" I.D., 0.218" Wall

1 1/2" IPS
Schedule 40 1.625" O.D., 0.188" Wall
Schedule 80 1.187" I.D., 0.257" Wall

1 1/4" IPS
Schedule 40 1.312" O.D., 0.187" Wall
Schedule 80 0.875" I.D., 0.191" Wall

1 1/8" IPS
Schedule 40 1.000" O.D., 0.187" Wall
Schedule 80 0.562" I.D., 0.154" Wall

1" IPS
Schedule 40 0.687" O.D., 0.187" Wall
Schedule 80 0.250" I.D., 0.154" Wall

3/4" IPS
Schedule 40 0.375" O.D., 0.187" Wall
Schedule 80 0.125" I.D., 0.154" Wall