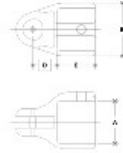


**07270 Adj. Elbow or Tee Female Body Aluminum Magnesium 1-1/4" IPS (1.72" ID)**



NOTE: DIMENSIONS LISTED IN BRACKETED DIMENSIONS  
ARE TO BE USED FOR MOUNTING



**#17F Adjustable Elbow or Tee Female Body**

PIPE SIZE	DIMENSIONS (IPS) (in)							PIPE SCS	DIMENSIONS (METRIC) (mm)						
	A	B	C	E	K	F	G		A	B	O	D	K	F	G
1/2"	1.12	1.00	1.12	1.12	1.12	1.12	1.12	1.315	28.5	25.4	28.5	28.5	28.5	28.5	28.5
3/4"	1.31	1.19	1.31	1.31	1.31	1.31	1.31	1.651	33.3	30.2	33.3	33.3	33.3	33.3	33.3
1"	1.50	1.38	1.50	1.50	1.50	1.50	1.50	1.915	38.1	35.0	38.1	38.1	38.1	38.1	38.1
1 1/4"	1.88	1.76	1.88	1.88	1.88	1.88	1.88	2.375	47.8	44.7	47.8	47.8	47.8	47.8	47.8
1 1/2"	2.07	1.95	2.07	2.07	2.07	2.07	2.07	2.743	52.6	49.5	52.6	52.6	52.6	52.6	52.6
2"	2.45	2.33	2.45	2.45	2.45	2.45	2.45	3.307	62.2	59.1	62.2	62.2	62.2	62.2	62.2
2 1/2"	2.83	2.71	2.83	2.83	2.83	2.83	2.83	3.863	72.1	69.0	72.1	72.1	72.1	72.1	72.1
3"	3.21	3.09	3.21	3.21	3.21	3.21	3.21	4.419	81.8	78.7	81.8	81.8	81.8	81.8	81.8

Click here for chart

**BUYRAILINGS**  
EQUIPMENT FOR RAILINGS

2 1/2" IPS  
2 1/2" Sch 40 O.D.  
Schedule 40 2.375" I.D., 0.148" Wall  
Schedule 40 1.875" I.D., 0.218" Wall

1 1/2" IPS  
1 1/2" Sch 40 O.D.  
Schedule 40 1.625" I.D., 0.148" Wall  
Schedule 40 1.125" I.D., 0.257" Wall

1" IPS  
1" Sch 40 O.D.  
Schedule 40 0.875" I.D., 0.148" Wall  
Schedule 40 0.375" I.D., 0.178" Wall

3/4" IPS  
3/4" Sch 40 O.D.  
Schedule 40 0.625" I.D., 0.148" Wall  
Schedule 40 0.125" I.D., 0.158" Wall