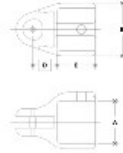


06270 Adj. Elbow or Tee Female Body Aluminum Magnesium 1" IPS (1.38" ID)



NOTE: DIMENSIONS LISTED IN BRACKETED DIMENSIONS
ARE TO BE USED FOR MOUNTING



#17F Adjustable Elbow or Tee Female Body

PIPE SIZE	DIMENSIONS (INCH)								PIPE SIZES	DIMENSIONS (MILLIMETER)							
	A	B	C	D	E	F	G	H		A	B	C	D	E	F	G	
1/2"	1.10	1.00	1.10	1.10	1.10	1.10	1.10	1.10	27.94	25.40	27.94	27.94	27.94	27.94	27.94	27.94	
3/4"	1.25	1.15	1.25	1.25	1.25	1.25	1.25	1.25	31.75	29.21	31.75	31.75	31.75	31.75	31.75	31.75	
1"	1.40	1.30	1.40	1.40	1.40	1.40	1.40	1.40	35.56	33.02	35.56	35.56	35.56	35.56	35.56	35.56	
1 1/4"	1.75	1.65	1.75	1.75	1.75	1.75	1.75	1.75	44.45	41.91	44.45	44.45	44.45	44.45	44.45	44.45	
2"	2.10	2.00	2.10	2.10	2.10	2.10	2.10	2.10	53.34	50.80	53.34	53.34	53.34	53.34	53.34	53.34	

Click here for chart

BUYRAILINGS
ARCHITECTURAL AND INDUSTRIAL RAILINGS

2" IPS
2.375" Outer O.D.
Schedule 40 2.381" I.D. 0.148" Wall
Schedule 80 1.937" I.D. 0.218" Wall

1 1/2" IPS
1.900" Outer O.D.
Schedule 40 1.907" I.D. 0.148" Wall
Schedule 80 1.557" I.D. 0.257" Wall

1" IPS
1.315" Outer O.D.
Schedule 40 1.321" I.D. 0.148" Wall
Schedule 80 1.077" I.D. 0.178" Wall

3/4" IPS
1.060" Outer O.D.
Schedule 40 1.067" I.D. 0.148" Wall
Schedule 80 0.817" I.D. 0.158" Wall