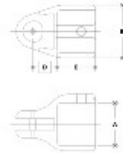


**05270 Adj. Elbow or Tee Female Body Aluminum Magnesium 3/4" IPS (1.09" ID)**



NOTE: DIMENSIONS LISTED IN BRACKETED DIMENSIONS  
ARE TO BE USED FOR MOUNTING



**#17F Adjustable Elbow or Tee Female Body**

PIPE SIZE	DIMENSIONS (INCH)							PIPE SIZES	DIMENSIONS (MILLIMETER)						
	A	B	C	E	K	F	G		A	B	O	D	K	F	G
3/4"	1.12	1.00	1.12	1.12	1.12	1.12	1.12	3/4"	28.2	25.4	28.2	28.2	28.2	28.2	28.2
1"	1.31	1.19	1.31	1.31	1.31	1.31	1.31	1"	33.1	30.2	33.1	33.1	33.1	33.1	33.1
1 1/4"	1.69	1.57	1.69	1.69	1.69	1.69	1.69	1 1/4"	42.9	40.0	42.9	42.9	42.9	42.9	42.9
1 1/2"	1.88	1.76	1.88	1.88	1.88	1.88	1.88	1 1/2"	47.8	44.9	47.8	47.8	47.8	47.8	47.8
2"	2.26	2.14	2.26	2.26	2.26	2.26	2.26	2"	57.4	54.6	57.4	57.4	57.4	57.4	57.4
2 1/2"	2.64	2.52	2.64	2.64	2.64	2.64	2.64	2 1/2"	67.1	64.3	67.1	67.1	67.1	67.1	67.1
3"	3.02	2.90	3.02	3.02	3.02	3.02	3.02	3"	76.8	74.0	76.8	76.8	76.8	76.8	76.8

[Click here for chart](#)

**BUYRAILINGS**  
ARCHITECTURAL AND INDUSTRIAL RAILINGS

2 1/2" IPS  
2.575" Min. O.D.  
Schedule 40 2.561" I.D., 0.144" Wall  
Schedule 40 1.937" I.D., 0.218" Wall

2" IPS  
1.937" Min. O.D.  
Schedule 40 1.923" I.D., 0.140" Wall  
Schedule 40 1.307" I.D., 0.207" Wall

1 1/2" IPS  
1.307" Min. O.D.  
Schedule 40 1.293" I.D., 0.140" Wall  
Schedule 40 0.677" I.D., 0.174" Wall

1" IPS  
0.875" Min. O.D.  
Schedule 40 0.861" I.D., 0.140" Wall  
Schedule 40 0.257" I.D., 0.114" Wall

3/4" IPS  
0.675" Min. O.D.  
Schedule 40 0.661" I.D., 0.140" Wall  
Schedule 40 0.041" I.D., 0.104" Wall