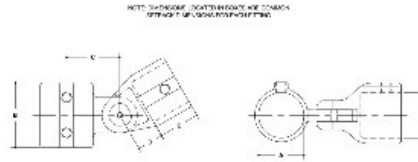


**06230 Adj. Elbow or Tee Assembly Aluminum Magnesium 1" IPS (1.38" ID)**



**#17 Adjustable Elbow or Tee Assembly**

IPS DIA	EQUILIBRIUM						HEAVY-DUTY										
	A	B	C	D	E	F	G	H	I	J	K	L	M	N	O	P	Q
2"	2.4	3.0	3.3	3.7	3.1												
2 1/2"	3.1	3.7	4.0	4.4	3.7												
3"	3.8	4.4	4.7	5.1	4.4												
3 1/2"	4.5	5.1	5.4	5.8	5.1												
4"	5.2	5.8	6.1	6.5	5.8												
4 1/2"	5.9	6.5	6.8	7.2	6.5												
5"	6.6	7.2	7.5	7.9	7.2												
5 1/2"	7.3	7.9	8.2	8.6	7.9												
6"	8.0	8.6	8.9	9.3	8.6												
6 1/2"	8.7	9.3	9.6	10.0	9.3												
7"	9.4	10.0	10.3	10.7	10.0												
7 1/2"	10.1	10.7	11.0	11.4	10.7												
8"	10.8	11.4	11.7	12.1	11.4												
8 1/2"	11.5	12.1	12.4	12.8	12.1												
9"	12.2	12.8	13.1	13.5	12.8												
9 1/2"	12.9	13.5	13.8	14.2	13.5												
10"	13.6	14.2	14.5	14.9	14.2												

For Reduced Fittings: Male Part is the Top Rail part. Female Part is the part that attaches to the Vertical Post.

[Click here for chart](#)

**BUY RAILINGS**  
EQUIPMENT FOR RAILINGS

2" IPS  
Schedule 40 2.375" O.D. 0.188" Wall  
Schedule 80 1.937" I.D. 0.218" Wall

2 1/2" IPS  
Schedule 40 2.875" O.D. 0.188" Wall  
Schedule 80 2.437" I.D. 0.218" Wall

3" IPS  
Schedule 40 3.375" O.D. 0.188" Wall  
Schedule 80 2.937" I.D. 0.218" Wall

3 1/2" IPS  
Schedule 40 3.875" O.D. 0.188" Wall  
Schedule 80 3.437" I.D. 0.218" Wall

4" IPS  
Schedule 40 4.375" O.D. 0.188" Wall  
Schedule 80 3.937" I.D. 0.218" Wall

4 1/2" IPS  
Schedule 40 4.875" O.D. 0.188" Wall  
Schedule 80 4.437" I.D. 0.218" Wall

5" IPS  
Schedule 40 5.375" O.D. 0.188" Wall  
Schedule 80 4.937" I.D. 0.218" Wall

5 1/2" IPS  
Schedule 40 5.875" O.D. 0.188" Wall  
Schedule 80 5.437" I.D. 0.218" Wall

6" IPS  
Schedule 40 6.375" O.D. 0.188" Wall  
Schedule 80 5.937" I.D. 0.218" Wall

6 1/2" IPS  
Schedule 40 6.875" O.D. 0.188" Wall  
Schedule 80 6.437" I.D. 0.218" Wall

7" IPS  
Schedule 40 7.375" O.D. 0.188" Wall  
Schedule 80 6.937" I.D. 0.218" Wall

7 1/2" IPS  
Schedule 40 7.875" O.D. 0.188" Wall  
Schedule 80 7.437" I.D. 0.218" Wall

8" IPS  
Schedule 40 8.375" O.D. 0.188" Wall  
Schedule 80 7.937" I.D. 0.218" Wall

8 1/2" IPS  
Schedule 40 8.875" O.D. 0.188" Wall  
Schedule 80 8.437" I.D. 0.218" Wall

9" IPS  
Schedule 40 9.375" O.D. 0.188" Wall  
Schedule 80 8.937" I.D. 0.218" Wall

9 1/2" IPS  
Schedule 40 9.875" O.D. 0.188" Wall  
Schedule 80 9.437" I.D. 0.218" Wall

10" IPS  
Schedule 40 10.375" O.D. 0.188" Wall  
Schedule 80 9.937" I.D. 0.218" Wall