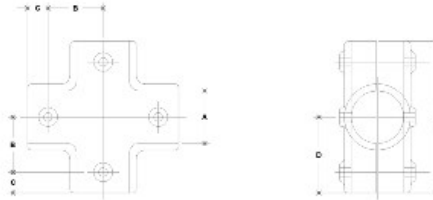


38860 Mend-A-Rail Cross Aluminum Magnesium 1-1/2" IPS (1.94" ID)



NOTE: DIMENSIONS LOCATED IN BOXES ARE COMMON
DIMENSIONS FOR EACH FITTING



#700 Mend-A-Rail Cross

CALL: 38860

PIPE O.D.	ENGLISH UNITS (Inches)					PIPE O.D.	METRIC UNITS (mm)				
	A	B	C	D	E		A	B	C	D	E
1 1/2"	1.55	1.41	2.15	2.05	3.95	39.5	36	36	54	52	100
1"	-	-	-	-	-	-	-	-	-	-	-
3/4"	-	-	-	-	-	-	-	-	-	-	-

[Click here for chart](#)

BUYRAILINGS
EQUIPMENT FOR ARCHITECTURAL RAILINGS

2" IPS
Schedule 40 2.375" O.D., 0.188" Wall
Schedule 80 1.937" I.D., 0.218" Wall

1.5" IPS
Schedule 40 1.613" O.D., 0.148" Wall
Schedule 80 1.537" I.D., 0.207" Wall

1.5" IPS
Schedule 40 1.587" O.D., 0.147" Wall
Schedule 80 1.279" I.D., 0.181" Wall

1" IPS
Schedule 40 1.315" O.D., 0.133" Wall
Schedule 80 1.087" I.D., 0.174" Wall

3/4" IPS
Schedule 40 1.062" O.D., 0.117" Wall
Schedule 80 0.914" I.D., 0.154" Wall