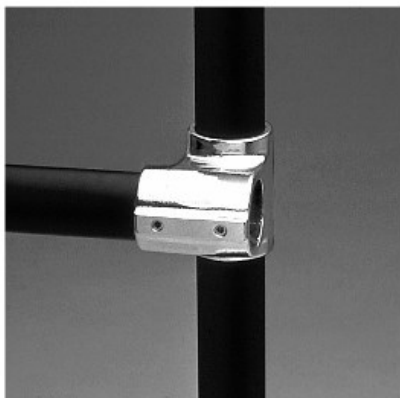
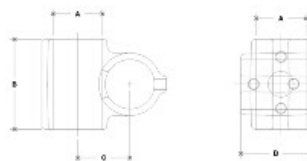


**08510 Nu-Rail Modified Cross Aluminum Magnesium 1-1/2" IPS (1.94" ID)**



NOTE: DIMENSIONS LOCATED IN BODIES ARE COMMON  
DIMENSIONS DIMENSIONS FOR EACH FITTING



**#30A Nu-Rail Modified Cross**

SCALE: 1/2"=1"

PIPE SIZE	ENGLISH UNITS (Inches)							PIPE SIZE	METRIC UNITS (mm)						
	A	B	C	D	E	F	G		A	B	C	D	E	F	G
1/2"	1.31	2.50	2.50	2.50	1.75	1.75	1.75	33	64	64	64	44	44	44	44
3/4"	1.62	3.00	3.00	3.00	2.12	2.12	2.12	41	76	76	76	54	54	54	54
1"	1.93	3.50	3.50	3.50	2.50	2.50	2.50	49	89	89	89	64	64	64	64
1 1/2"	2.54	4.50	4.50	4.50	3.25	3.25	3.25	64	114	114	114	83	83	83	83

[Click here for chart](#)

**BUYRAILINGS**  
ARCHITECTURAL & INDUSTRIAL RAILINGS

2" IPS  
2.31" Outside O.D.  
Schedule 40 2.307" I.D. 0.154" Wall  
Schedule 80 1.929" I.D. 0.218" Wall

1 1/2" IPS  
1.93" Outside O.D.  
Schedule 40 1.927" I.D. 0.147" Wall  
Schedule 80 1.651" I.D. 0.222" Wall

1" IPS  
1.31" Outside O.D.  
Schedule 40 1.307" I.D. 0.147" Wall  
Schedule 80 1.179" I.D. 0.191" Wall

3/4" IPS  
1.06" Outside O.D.  
Schedule 40 1.057" I.D. 0.113" Wall  
Schedule 80 0.914" I.D. 0.154" Wall