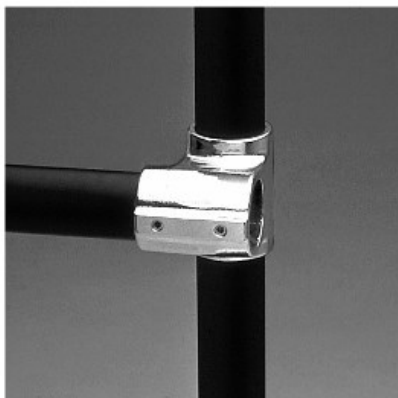
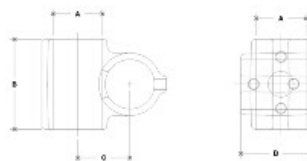


06510 Nu-Rail Modified Cross Aluminum Magnesium 1" IPS (1.38" ID)



NOTE: DIMENSIONS LOCATED IN BODIES ARE COMMON
STRENGTH DIMENSIONS FOR EACH FITTING



#30A Nu-Rail Modified Cross

SCALE: 1/2"=1"

PIPE SIZE	ENGLISH UNITS (Inches)						PIPE SIZE	METRIC UNITS (mm)					
	A	B	C	D	E	F		A	B	C	D	E	F
1/2"	1.12	1.12	1.12	1.12	1.12	1.12	28	28	28	28	28	28	
3/4"	1.31	1.31	1.31	1.31	1.31	1.31	33	33	33	33	33	33	
1"	1.50	1.50	1.50	1.50	1.50	1.50	38	38	38	38	38	38	
1 1/4"	1.87	1.87	1.87	1.87	1.87	1.87	47	47	47	47	47	47	
1 1/2"	2.12	2.12	2.12	2.12	2.12	2.12	54	54	54	54	54	54	

[Click here for chart](#)

BUYRAILINGS
ARCHITECTURAL & INDUSTRIAL RAILINGS

2" IPS
2.315" Outside O.D.
Schedule 40 2.380" I.D. 0.154" Wall
Schedule 80 1.880" I.D. 0.218" Wall

1.5" IPS
1.625" Outside O.D.
Schedule 40 1.620" I.D. 0.140" Wall
Schedule 80 1.480" I.D. 0.200" Wall

1.315" IPS
1.380" Outside O.D.
Schedule 40 1.380" I.D. 0.140" Wall
Schedule 80 1.270" I.D. 0.150" Wall

1" IPS
1.315" Outside O.D.
Schedule 40 1.315" I.D. 0.133" Wall
Schedule 80 1.170" I.D. 0.110" Wall

3/4" IPS
0.875" Outside O.D.
Schedule 40 0.875" I.D. 0.110" Wall
Schedule 80 0.740" I.D. 0.104" Wall