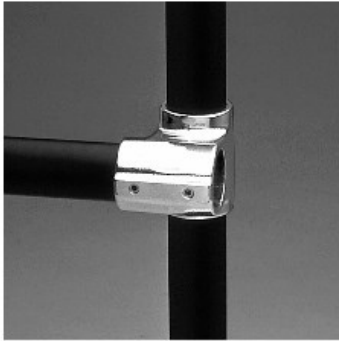
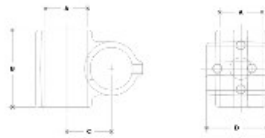


05510 Nu-Rail Modified Cross Aluminum Magnesium 3/4" IPS (1.09" ID)



NOTE: DIMENSIONS LISTED ARE NOMINAL DIMENSIONS
FITTING DIMENSIONS FOR WELD-FITTING



#30A Nu-Rail Modified Cross

PIPE SIZE	ENGLISH UNITS (inches)							METRIC UNITS (mm)						
	A	B	C	D	E	F	G	A	B	C	D	E	F	G
1/2"	1.31	1.31	1.31	1.31	1.31	1.31	1.31	33.3	33.3	33.3	33.3	33.3	33.3	33.3
3/4"	1.50	1.50	1.50	1.50	1.50	1.50	1.50	38.1	38.1	38.1	38.1	38.1	38.1	38.1
1"	1.69	1.69	1.69	1.69	1.69	1.69	1.69	42.9	42.9	42.9	42.9	42.9	42.9	42.9
1 1/4"	1.88	1.88	1.88	1.88	1.88	1.88	1.88	47.8	47.8	47.8	47.8	47.8	47.8	47.8
2"	2.07	2.07	2.07	2.07	2.07	2.07	2.07	52.7	52.7	52.7	52.7	52.7	52.7	52.7

[Click here for chart](#)

BUYRAILINGS
EQUIPMENT AND ACCESSORIES

2" IPS
2.375" Min. O.D.
Schedule 40 2.381" I.D., 0.148" Wall
Schedule 80 1.937" I.D., 0.218" Wall

1 1/2" IPS
1.907" Min. O.D.
Schedule 40 1.913" I.D., 0.148" Wall
Schedule 80 1.557" I.D., 0.257" Wall

1" IPS
1.315" Min. O.D.
Schedule 40 1.321" I.D., 0.148" Wall
Schedule 80 1.077" I.D., 0.178" Wall

3/4" IPS
1.063" Min. O.D.
Schedule 40 1.069" I.D., 0.148" Wall
Schedule 80 0.825" I.D., 0.158" Wall

1/2" IPS
0.675" Min. O.D.
Schedule 40 0.681" I.D., 0.148" Wall
Schedule 80 0.537" I.D., 0.178" Wall