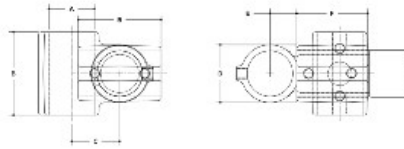


09500 Nu-Rail Adj. Cross Aluminum Magnesium 2" IPS (2.41" ID)



NOTE: DIMENSIONS INDICATED BEHIND THE COMMON
SECTION INDICATE THE FITTING



#30 Nu-Rail Adjustable Cross

PIPE SIZE	LINK-UP FITTING						MULTI-PIPE FITTING									
	A	B	C	D	E	F	G	H	I	J	K	L	M	N	O	
2"	2.40	4.02	2.58	3.17	1.58	2.27	—	—	—	—	—	—	—	—	—	—
1 1/2"	1.80	3.06	2.04	2.44	1.15	1.70	—	—	—	—	—	—	—	—	—	—
1 1/4"	1.68	2.83	1.91	2.15	1.06	1.35	—	—	—	—	—	—	—	—	—	—
1"	1.20	2.03	1.44	1.59	.82	1.01	—	—	—	—	—	—	—	—	—	—
3/4"	1.07	1.82	1.29	1.40	.69	0.82	—	—	—	—	—	—	—	—	—	—

- Quick and easy way to assemble structural pipe systems • Galvanized malleable iron
- Reduce labor costs by 70% • 100% reusable • No welding or threading • No drilling or bolting

Strong, malleable iron, slip-on pipe fittings with from one to five case-hardened set screws per fitting – depending on the number of pipes to be joined at one joint.

For slip-on aluminum fittings. These fittings can support an axial load of 2000 lbs per set screw with the set screw tightened to a torque of 29 lbs/ft. This is normally obtained when the screw is fully tightened using a ratchet wrench.

30-8 is adjustable between 30° and 45° from the horizontal.