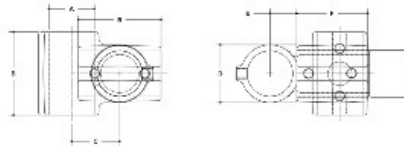


**08500 Nu-Rail Adj. Cross Aluminum Magnesium 1-1/2" IPS (1.94" ID)**



NOTE: DIMENSIONS INDICATED BEHIND THE COMMON  
SECTION DIMENSION TO EACH FITTING



**#30 Nu-Rail Adjustable Cross**

PIPE SIZE	LINK-UP FITTING						MULTI-PIPE FITTING					
	A	B	C	D	E	G	F	H	I	J	K	L
2"	2.40	4.02	2.58	3.17	1.58	2.27	2"	4.11	3.51	3.11	2.51	2.11
1 1/2"	1.80	3.06	1.94	2.38	1.19	1.70	1 1/2"	3.08	2.66	2.31	1.91	1.51
1 1/4"	1.68	2.83	1.81	2.15	1.06	1.35	1 1/4"	2.83	2.41	2.06	1.66	1.26
1"	1.20	2.03	1.34	1.59	.82	1.11	1"	2.03	1.71	1.36	1.01	.66
3/4"	1.07	1.82	1.23	1.40	.69	0.92	3/4"	1.82	1.50	1.15	.80	.45

- Quick and easy way to assemble structural pipe systems • Galvanized malleable iron
- Reduce labor costs by 70% • 100% reusable • No welding or threading • No drilling or bolting

Strong, malleable iron, slip-on pipe fittings with from one to five case-hardened set screws per fitting – depending on the number of pipes to be joined at one joint.

For slip-on aluminum fittings. These fittings can support an axial load of 2000 lbs per set screw with the set screw tightened to a torque of 29 lbs/ft. This is normally obtained when the screw is fully tightened using a ratchet wrench.

30-8 is adjustable between 30° and 45° from the horizontal.