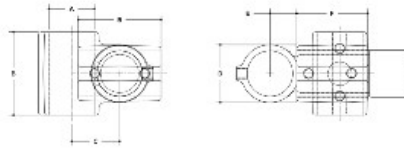


06500 Nu-Rail Adj. Cross Aluminum Magnesium 1" IPS (1.38" ID)



NOTE: DIMENSIONS INDICATED BEHIND THE COMMON
CUTAWAY DIMENSIONS FOR EACH FITTING



#30 Nu-Rail Adjustable Cross

| PIPE SIZE | LINK-UP FITTING | | | | | | MULTI-PIPE FITTING | | | | | | |
|-----------|-----------------|------|------|------|------|------|--------------------|------|------|------|------|------|------|
| | A | B | C | D | E | G | F | H | I | J | K | L | |
| 2" | 2.40 | 4.02 | 2.58 | 3.17 | 1.58 | 2.27 | 2" | 4.11 | 3.51 | 2.11 | 2.25 | 3.44 | 2.11 |
| 1 1/2" | 1.80 | 3.06 | 2.04 | 2.44 | 1.15 | 1.70 | 1 1/2" | 3.08 | 2.63 | 1.58 | 1.70 | 2.57 | 1.58 |
| 1" | 1.38 | 2.31 | 1.51 | 1.83 | 0.83 | 1.25 | 1" | 2.25 | 1.94 | 1.19 | 1.25 | 1.83 | 1.19 |
| 3/4" | 1.00 | 1.65 | 1.08 | 1.33 | 0.60 | 0.90 | 3/4" | 1.65 | 1.41 | 0.86 | 0.90 | 1.33 | 0.86 |
| 1/2" | 0.75 | 1.24 | 0.80 | 1.00 | 0.45 | 0.68 | 1/2" | 1.24 | 1.04 | 0.63 | 0.68 | 1.00 | 0.63 |

- Quick and easy way to assemble structural pipe systems • Galvanized malleable iron
- Reduce labor costs by 70% • 100% reusable • No welding or threading • No drilling or bolting

Strong, malleable iron, slip-on pipe fittings with from one to five case-hardened set screws per fitting – depending on the number of pipes to be joined at one joint.

For slip-on aluminum fittings. These fittings can support an axial load of 2000 lbs per set screw with the set screw tightened to a torque of 29 lbs/ft. This is normally obtained when the screw is fully tightened using a ratchet wrench.

30-8 is adjustable between 30° and 45° from the horizontal.